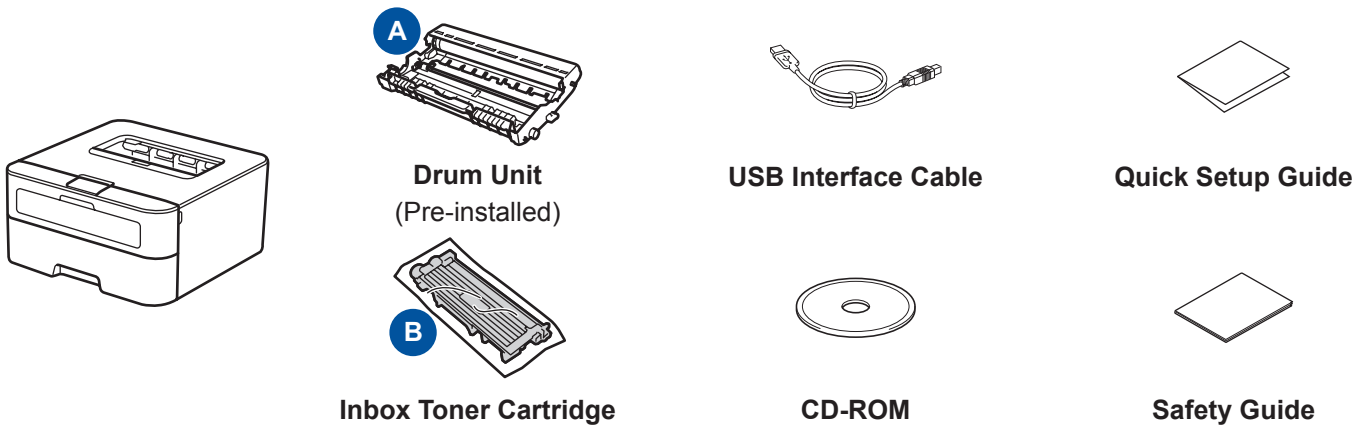


Quick Setup Guide

Unpack the machine and check the components

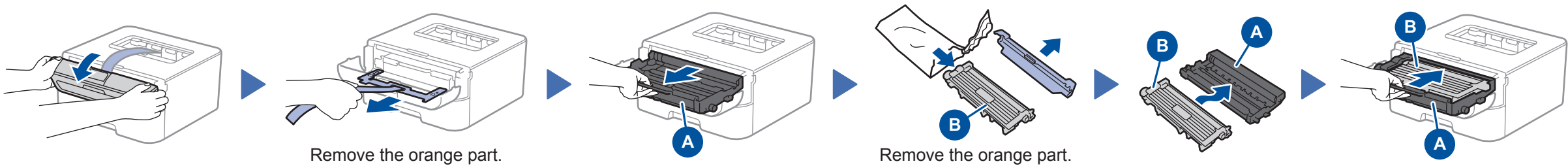


Read the Safety Guide first, then read this Quick Setup Guide for the correct installation procedure.

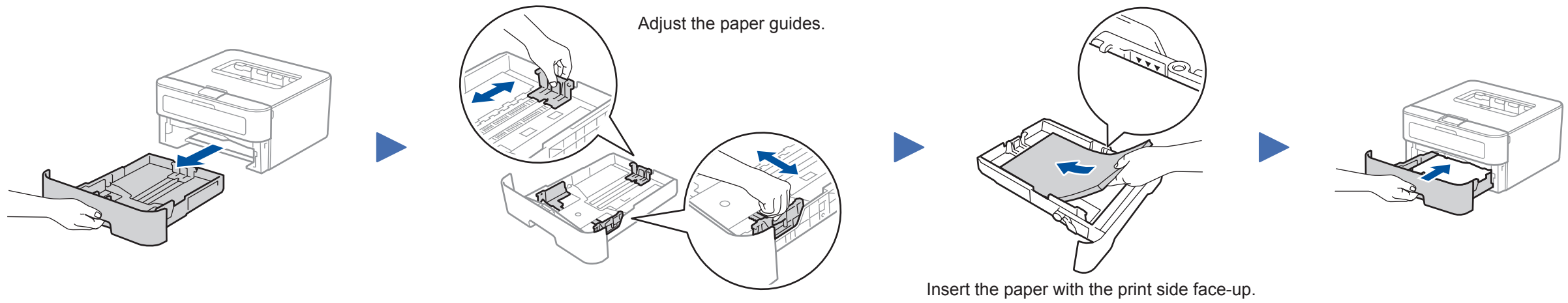
NOTE:
The USB cable is a standard accessory.

Network cable
Use a straight-through Category 5 (or greater) twisted-pair cable for 10BASE-T or 100BASE-TX Fast Ethernet Network.

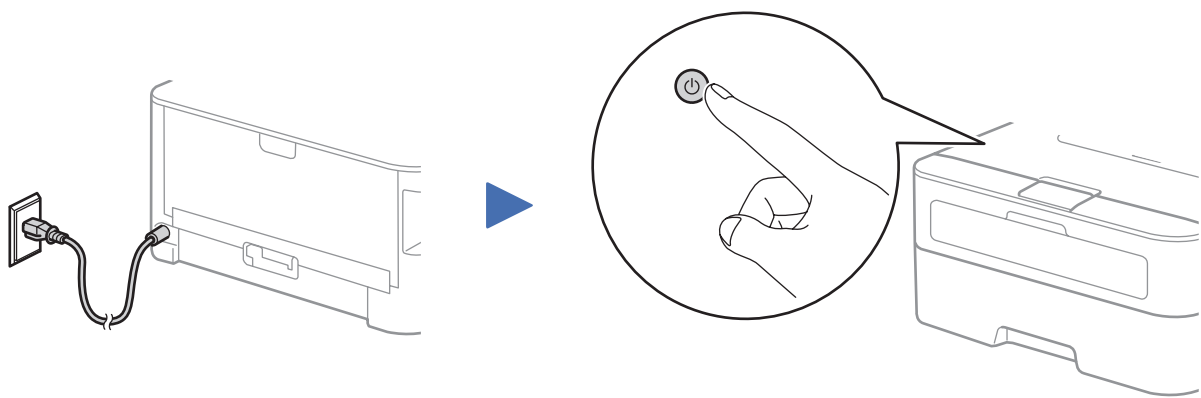
1 Remove the packing materials and install the toner cartridge



2 Load paper in the paper tray

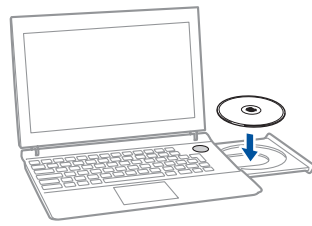


3 Connect the power cord and turn on the machine



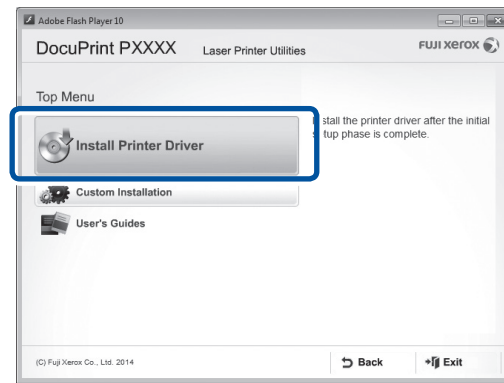


Configuration using the CD-ROM (Windows®)



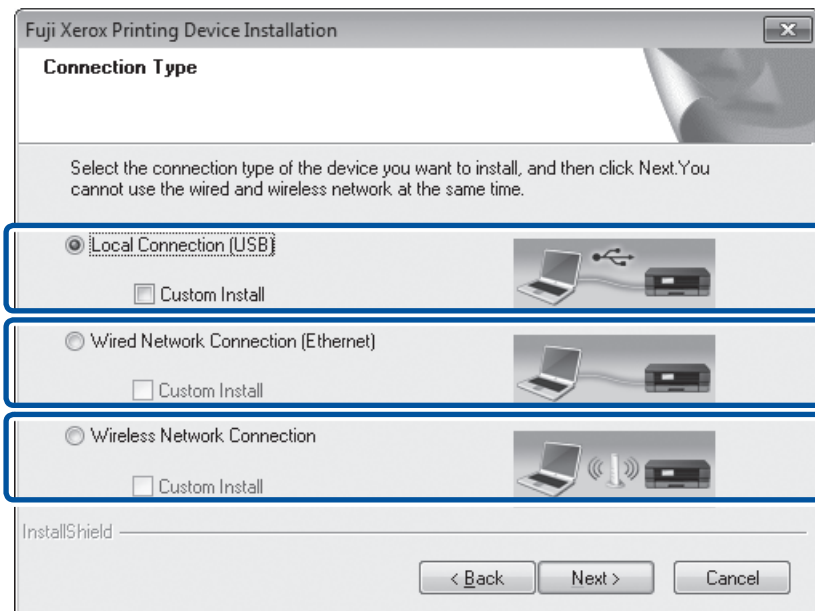
NOTE:

If the Fuji Xerox screen does not appear automatically, go to **Computer**.
(For Windows® 8: click the (File Explorer) icon on the taskbar, and then go to **Computer**.)
Double-click the CD-ROM icon, and then double-click **start.exe**.



Follow the on-screen instructions until the **Connection Type** screen appears.

Connection Type



For USB Connection

For Wired Network Connection
Connect a network cable first.

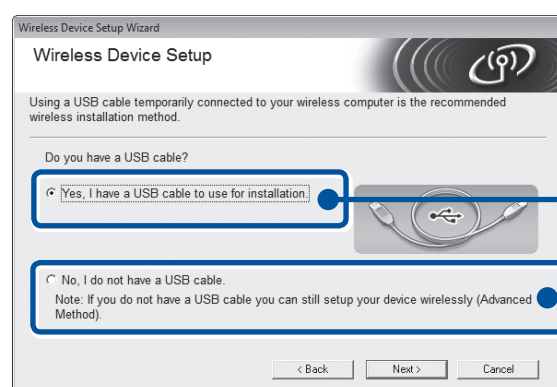
For Wireless Network Connection
We recommend preparing a USB cable to use temporarily during the wireless setup.

Follow the on-screen instructions to continue installation.

Finish



Wireless Network Connection



[Recommended]
Select this option if you have a USB cable to use temporarily for wireless setup.

Select this option if you do not have a USB cable.

Follow the on-screen instructions to continue installation.

Finish



Configuration without using the CD-ROM (Windows® without CD-ROM drive or Macintosh)

Download the full driver and software package by visiting the Fuji Xerox website at <http://www.fujixeroxprinters.com/>.

After you download the driver and software package, follow the on-screen instructions until the **Connection Type** screen appears. Refer to **4A Configuration using the CD-ROM (Windows®)**.

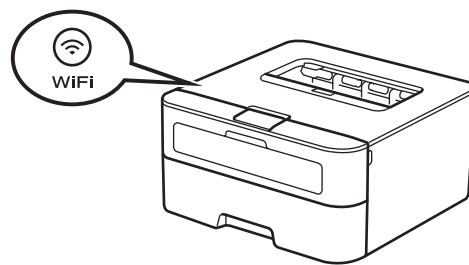


One-push wireless setup for mobile devices (Wireless models only)

If your wireless LAN access point/router supports automatic wireless (one-push) setup (WPS/AOSS™), you can set up your machine without using a computer.



Press the WPS or AOSS™ button on your wireless LAN access point/router.



Press the **WiFi** button on your machine.

Wireless setup is now complete.