

# 始终如一地为您提供帮助

在以下网站上注册产品并获得支持

[www.philips.com/support](http://www.philips.com/support)

HTB3581/93

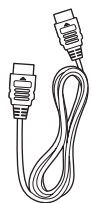
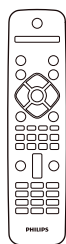


# 快速操作指南

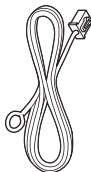


**ZH-CN** 使用产品前，请阅读所有随附的安全信息

**EN** Before using your product, read all accompanying safety information



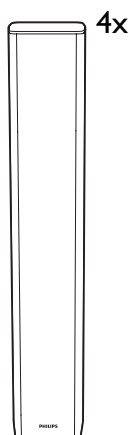
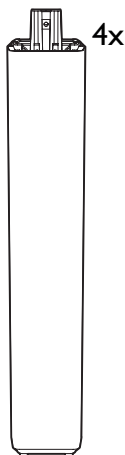
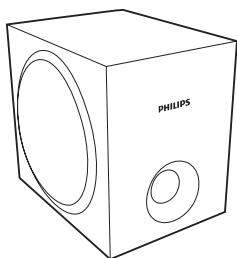
HDMI 线



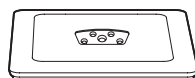
FM 天线



麦克风转接头



4x

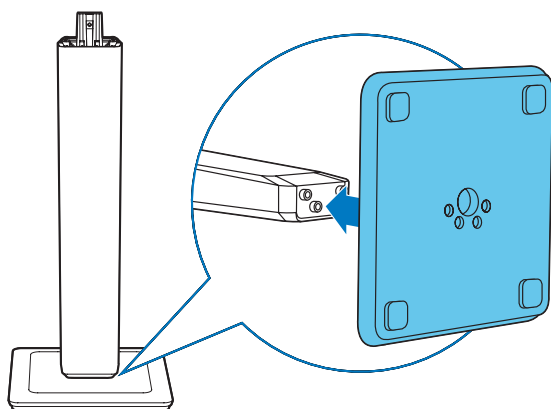


# 1

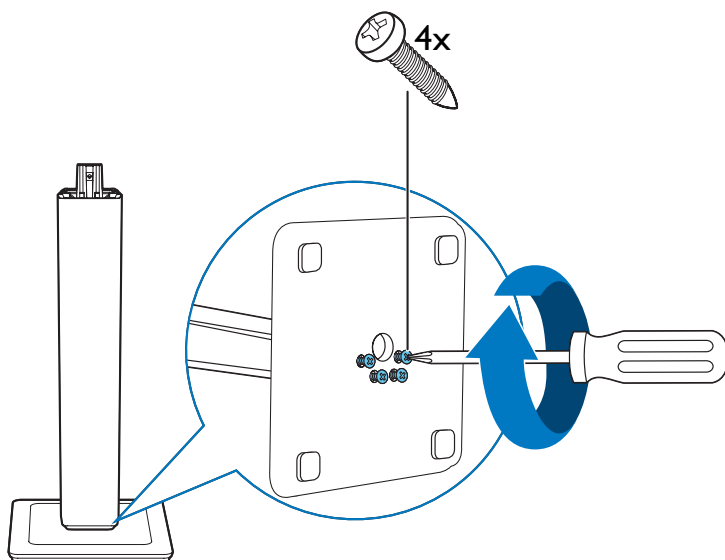
**ZH-CN** 桌架和扬声器

**EN** Stand mount the speakers

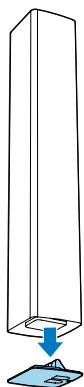
1



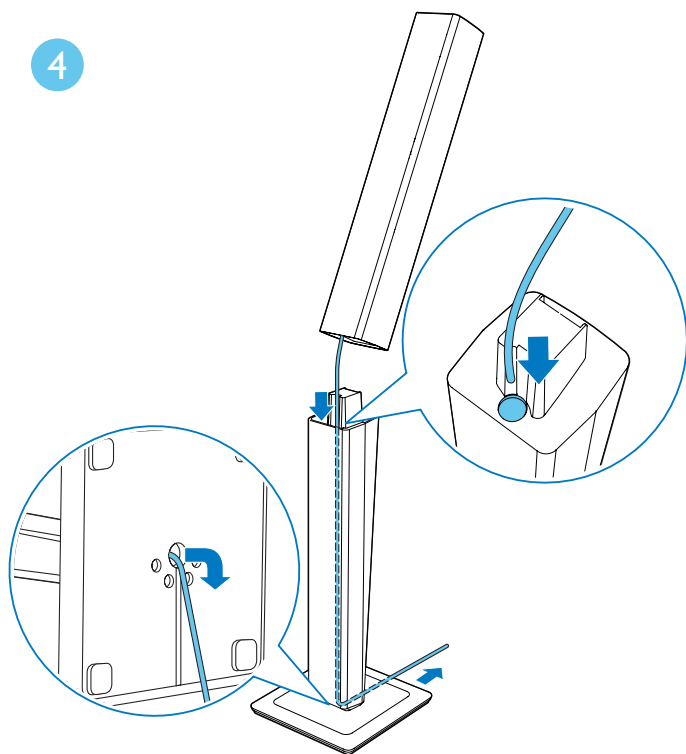
2



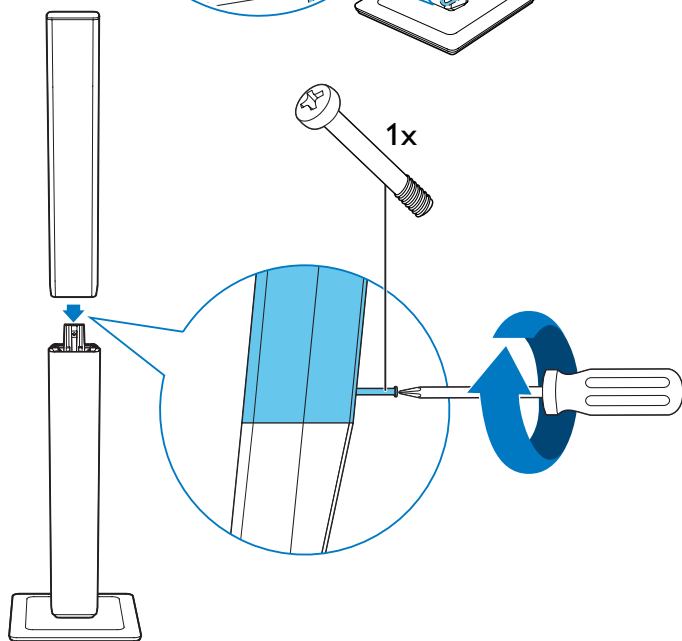
3



4



5

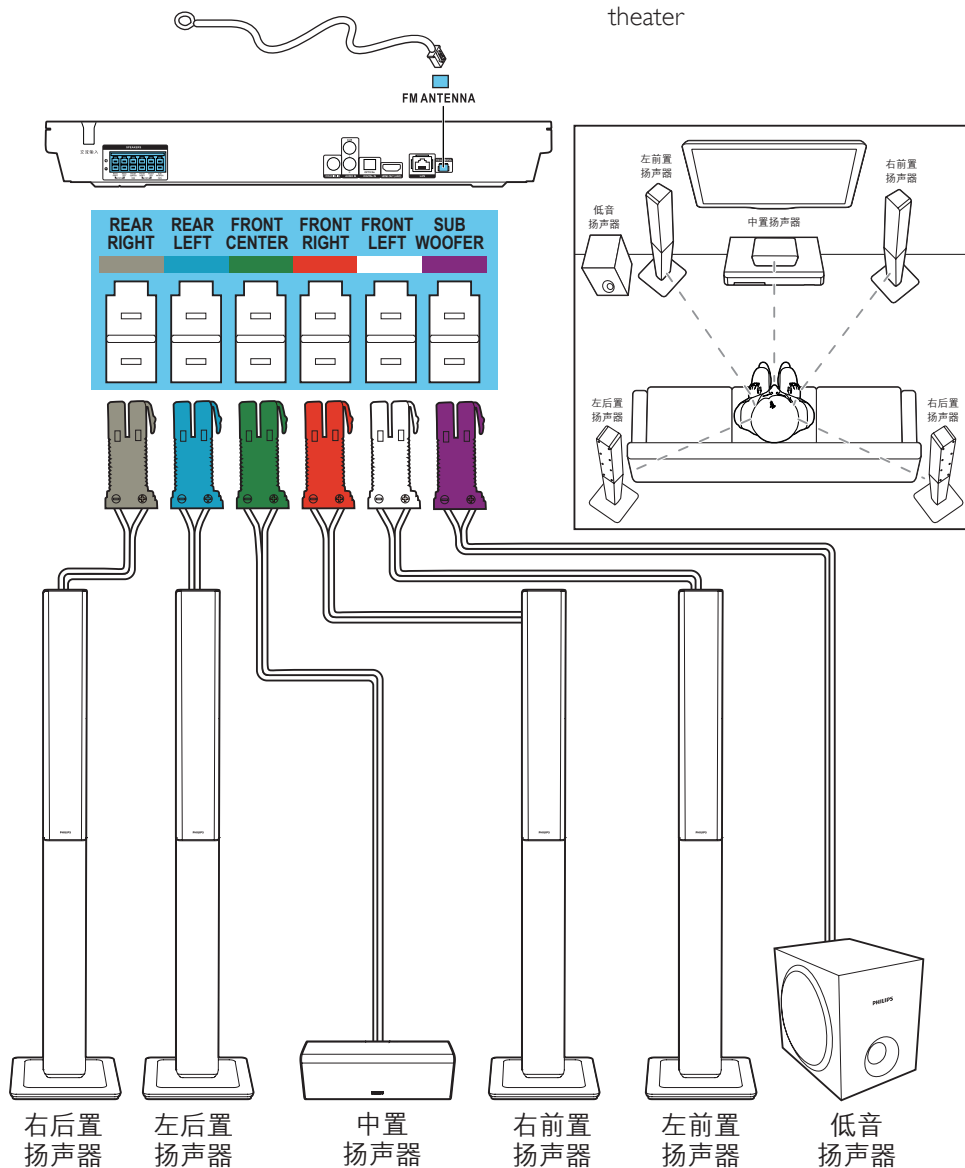


# 2

## ZH-CN 连接和放置家庭影院

## EN

Connect and position the home theater

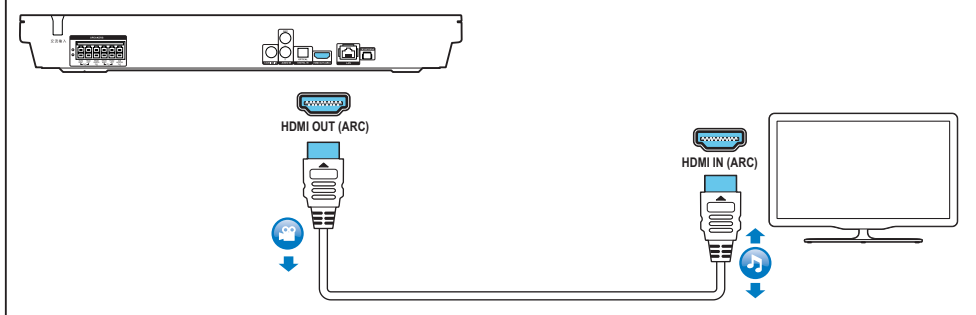


# 3

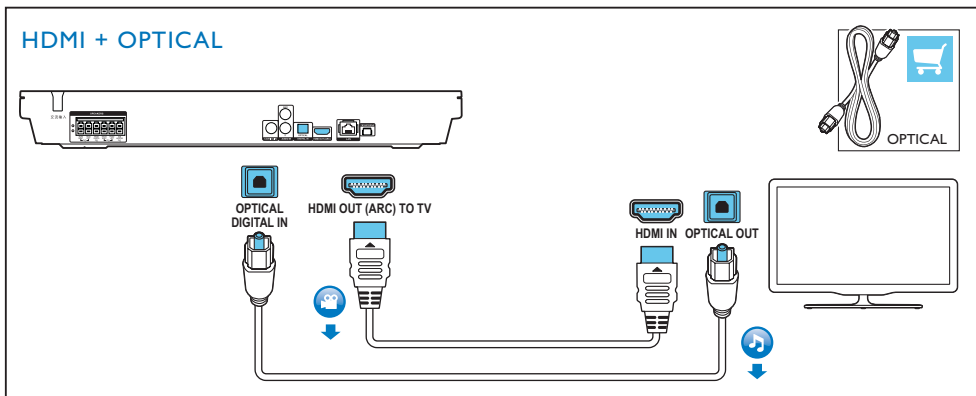
**ZH-CN** 通过这些方式连接至电视

**EN** Connect to TV in one of these ways

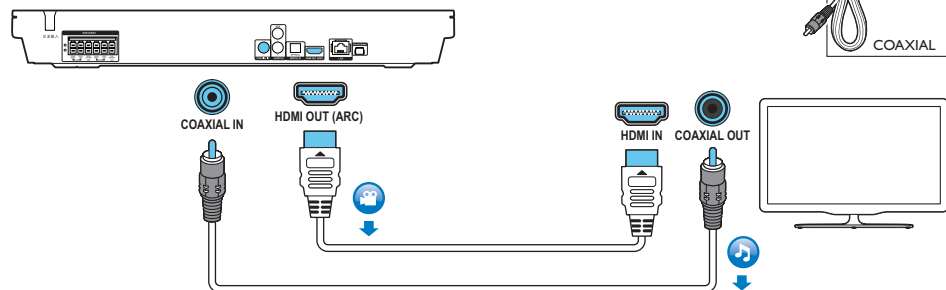
## HDMI ARC



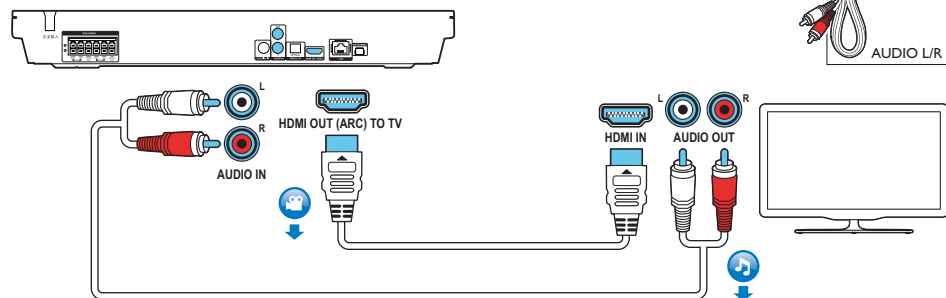
## HDMI + OPTICAL



## HDMI + COAXIAL



## HDMI + AUDIO L/R

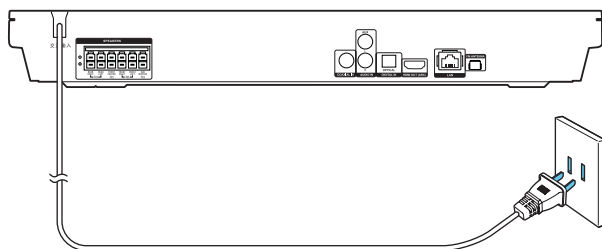


# 4

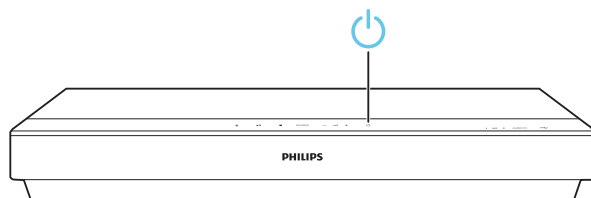
**ZH-CN** 打开家庭影院

**EN** Switch on the home theater

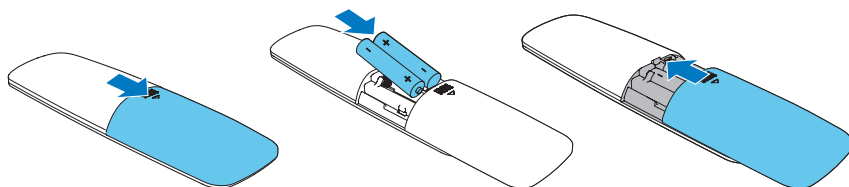
1



2



3

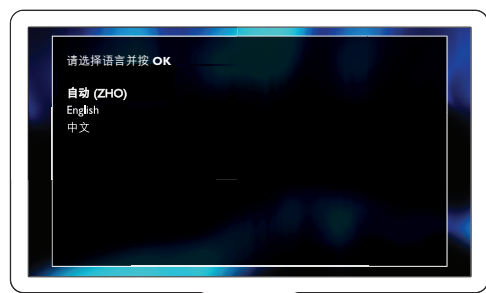
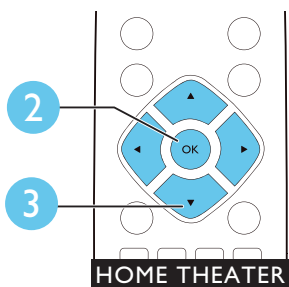
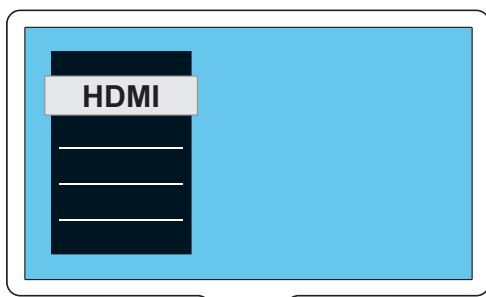
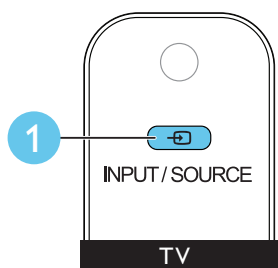




# 5

**ZH-CN** 完成首次设置

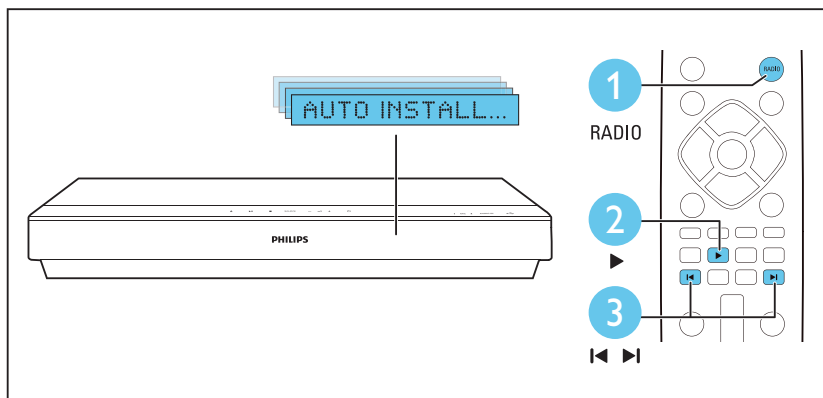
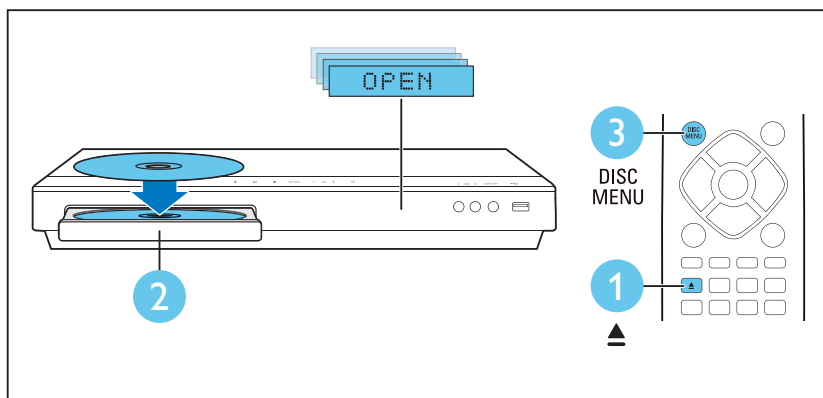
**EN** Complete the first time setup

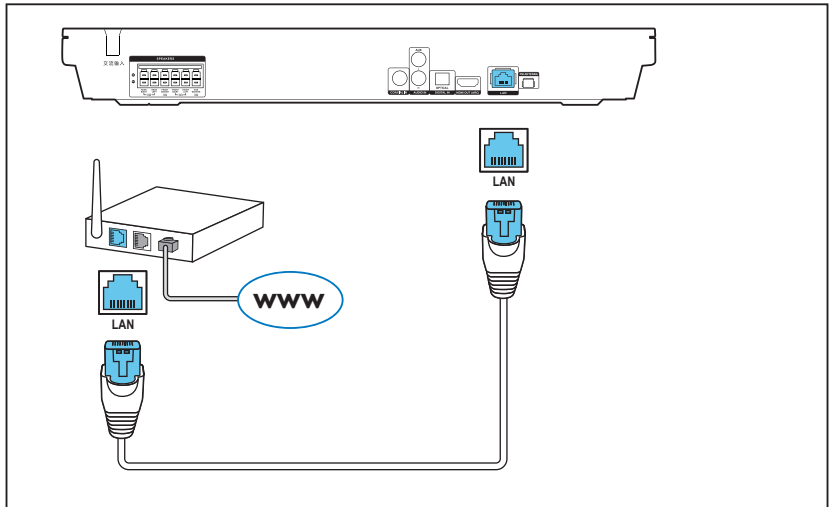
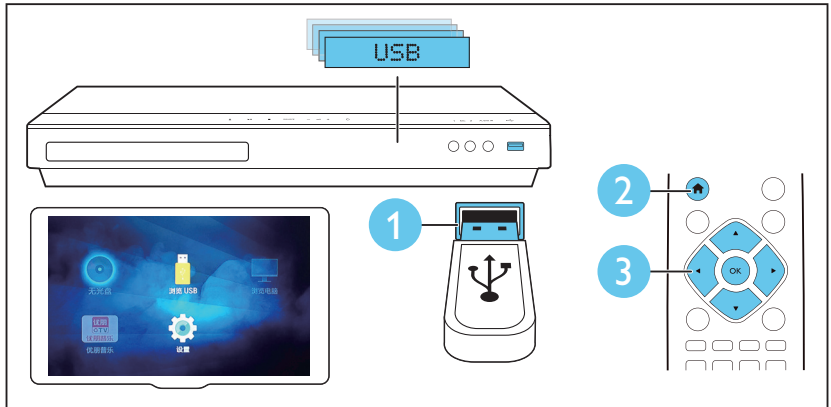
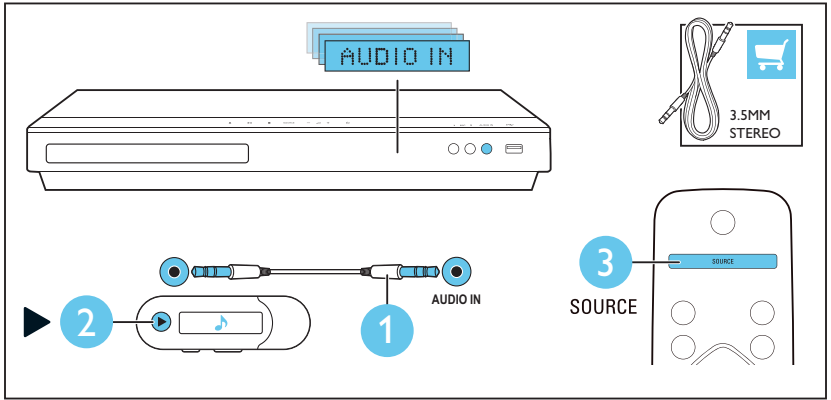


# 6

**ZH-CN** 使用家庭影院

**EN** Use your home theater







**ZH-CN** 访问 [www.philips.com/support](http://www.philips.com/support) 更  
详尽地了解本产品

**EN**

For more information about using  
this product, visit [www.philips.com/support](http://www.philips.com/support)



[www.philips.com/support](http://www.philips.com/support)



Specifications are subject to change without notice  
© 2014 Koninklijke Philips N.V. All rights reserved.  
Trademarks are the property of Koninklijke Philips N.V. or their respective owners.

HTB3581\_93\_QSG\_V1.0

