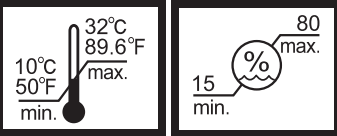
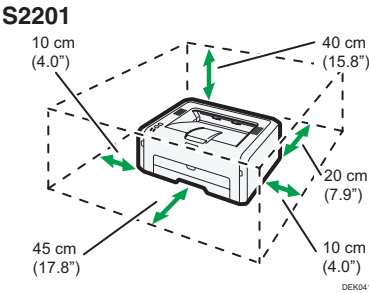
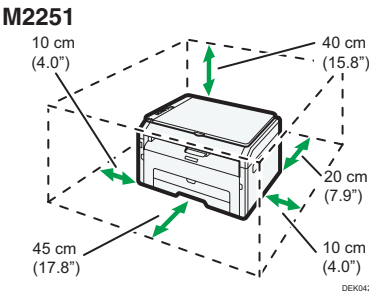
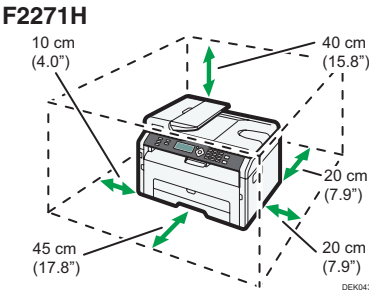


Quick Installation Guide

Read this manual carefully before you use the machine and keep it handy for future reference. For safe and correct use, be sure to read the Safety Information before using the machine. This manual briefly describes the procedure for installing this machine. For more details about other information, see User Guide in the CD-ROM. The procedure is explained using the F2271H as an example.

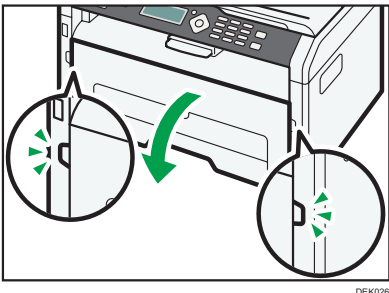
1 Place to Install



Power Source
220-240 V, 50/60 Hz, 5 A

2 Unpacking

1 Remove the adhesive tape.



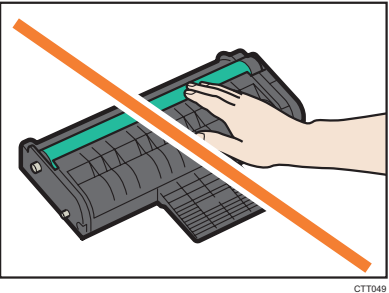
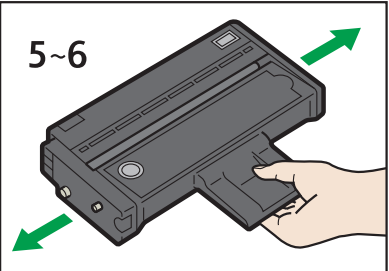
3



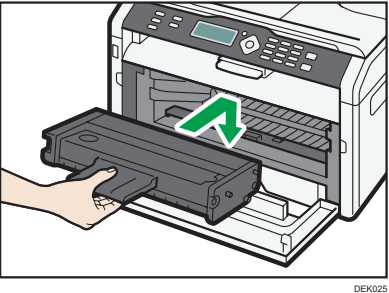
4



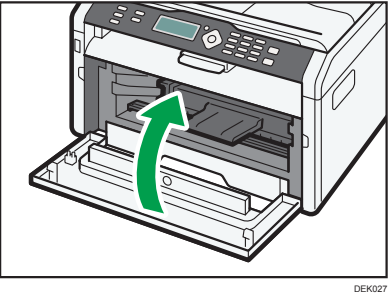
5



6



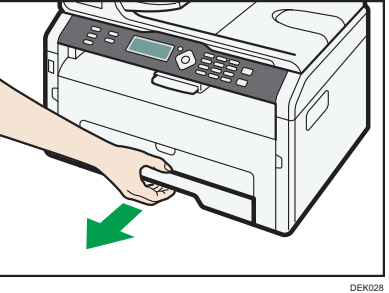
7



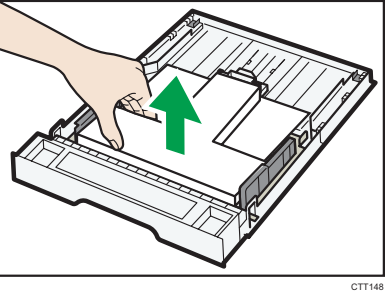
3 Loading Paper

tray1

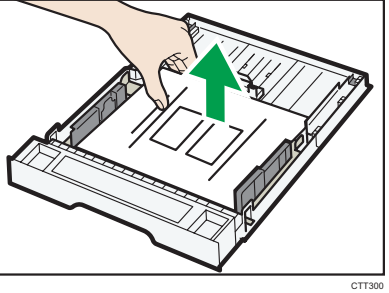
1



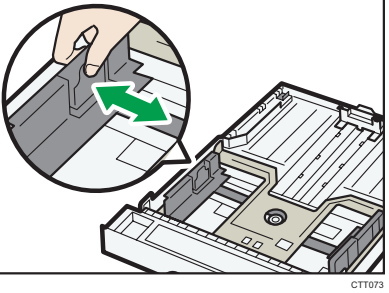
2



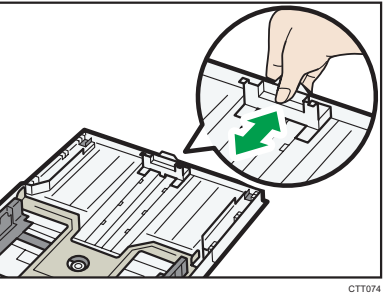
3



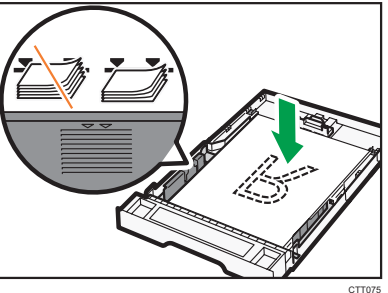
4



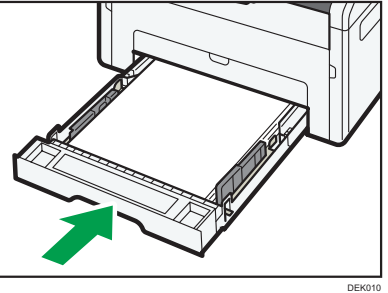
5



6

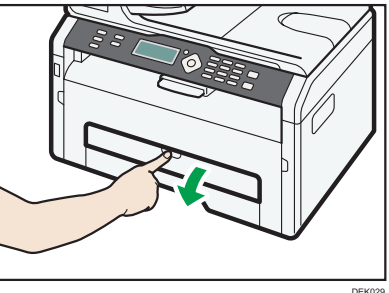


7

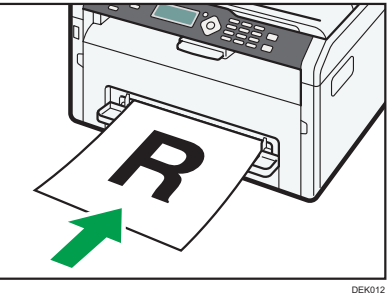


Bypass tray

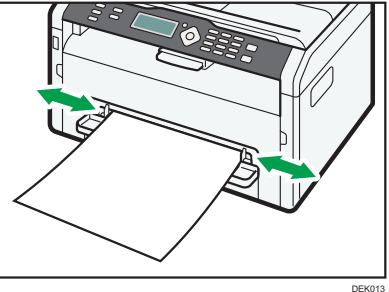
1



2

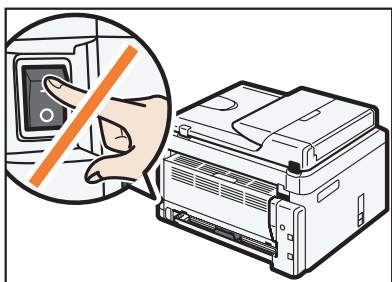


3



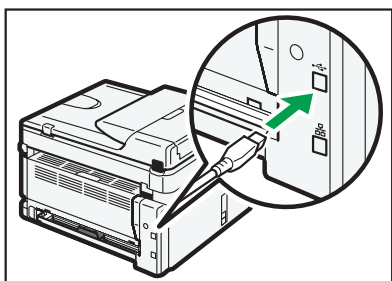
4 Connection

1

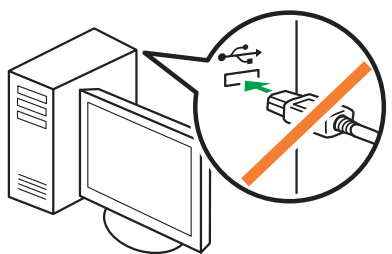


DEK049

2

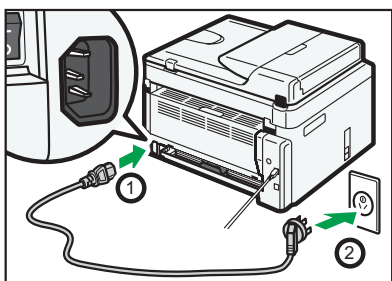


DEK050

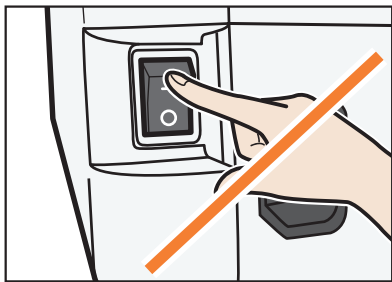


CXP122

3



DEK051



DEK107

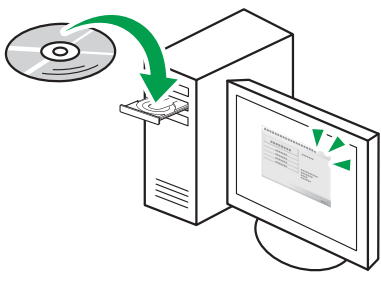
5 Installing the Driver for USB and Reading the Manual

1



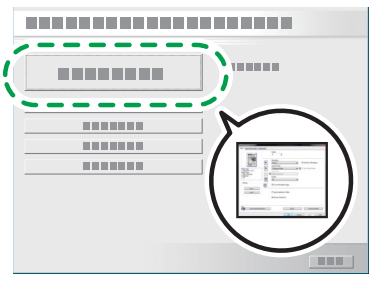
DEK057

2

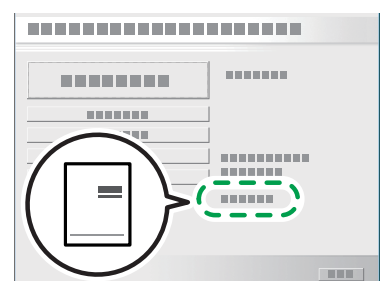


DEK058

3



DEK059



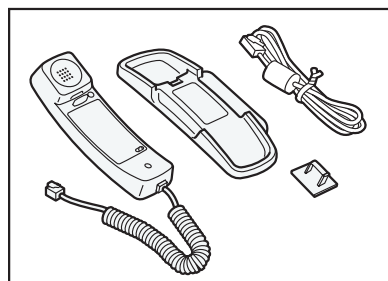
DEK060

Using the Fax Function

F2271H Only

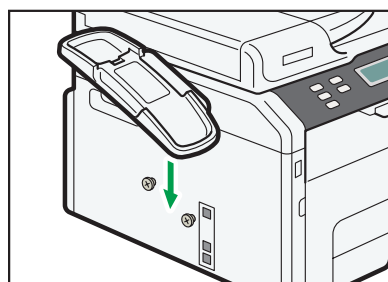
1 Connecting the Handset

1



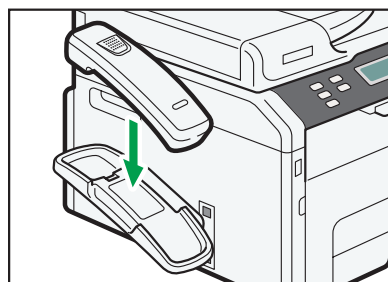
CTT143

2



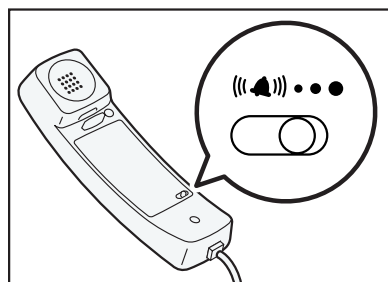
DEK044

3



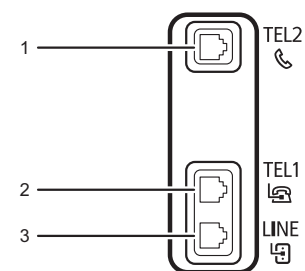
DEK045

4



CTT078

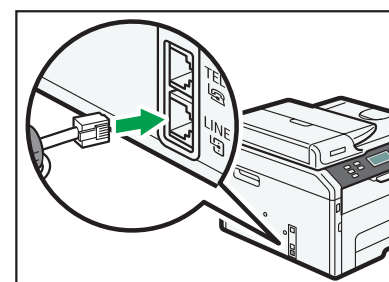
2 Connection



CTT093

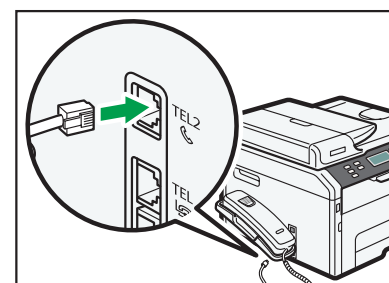
1. Port For Handset
2. Port For External Telephone
3. Port For LINE

1



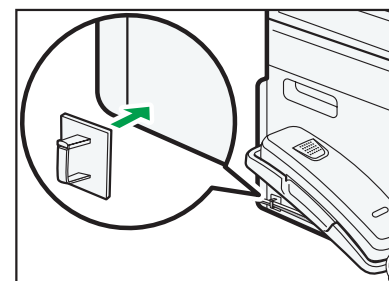
DEK046

2



DEK052

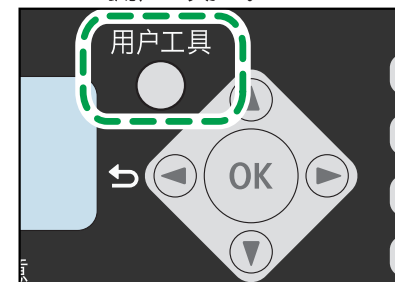
3



DEK048

3 Selecting the Telephone Line Type

1 Press the [用户工具] key.



CTT006

2 Press the [▼] or [▲] keys to select [Fax Features], and then press the [OK] key.

3 Press the [▼] or [▲] keys to select [Comm. Settings], and then press the [OK] key.

4 Press the [▼] or [▲] keys to select [Dial/Push Phone], and then press the [OK] key.

5 Press the [▼] or [▲] keys to select the telephone line type appropriate for your telephone service, and then press the [OK] key.

6 Press the [用户工具] key to return to the initial screen.

4 Selecting the Telephone Network Connection Type

1 Press the [用户工具] key.

2 Press the [▼] or [▲] keys to select [Fax Features], and then press the [OK] key.

3 Press the [▼] or [▲] keys to select [Comm. Settings], and then press the [OK] key.

4 Press the [▼] or [▲] keys to select [PSTN/PBX], and then press the [OK] key.

5 Press the [▼] or [▲] keys to select [PSTN] or [PBX], and then press the [OK] key.

6 Press the [用户工具] key to return to the initial screen.

5 Setting the Outside Line Access Number

If you have selected PBX, use the following procedure.

1 Press the [用户工具] key.

2 Press the [▼] or [▲] keys to select [Fax Features], and then press the [OK] key.

3 Press the [▼] or [▲] keys to select [Comm. Settings], and then press the [OK] key.

4 Press the [▼] or [▲] keys to select [PBX Access Number], and then press the [OK] key.

5 Enter the outside line access number using the number keys, and then press the [OK] key.

6 Press the [用户工具] key to return to the initial screen.

6 Basic Operation for Sending a Fax

1 Press the [传真/电话] key.



DEK003

2 Place the original on the exposure glass or in the ADF.

3 Enter the fax number using the number keys.

4 Press the [开始] key.

When you place original on the exposure glass and Memory Transmission mode is enabled, perform the following steps to scan the subsequent pages of the original.

5 Press the [1] key within 60 seconds, place the next original on the exposure glass, and then press the [OK] key.

Repeat this step until all originals are scanned.

6 Press the [2] key to start sending the fax.