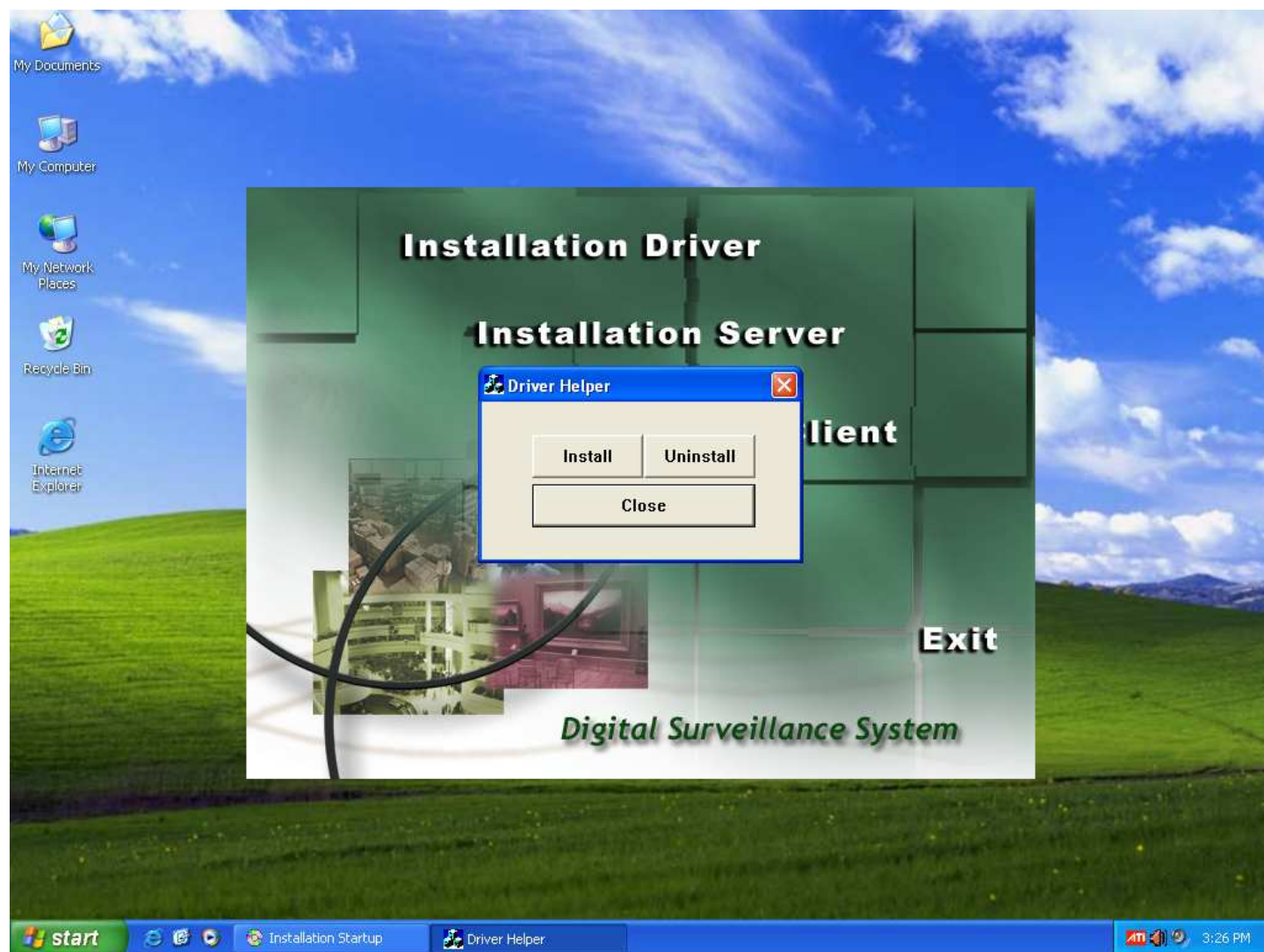


Software use Manual

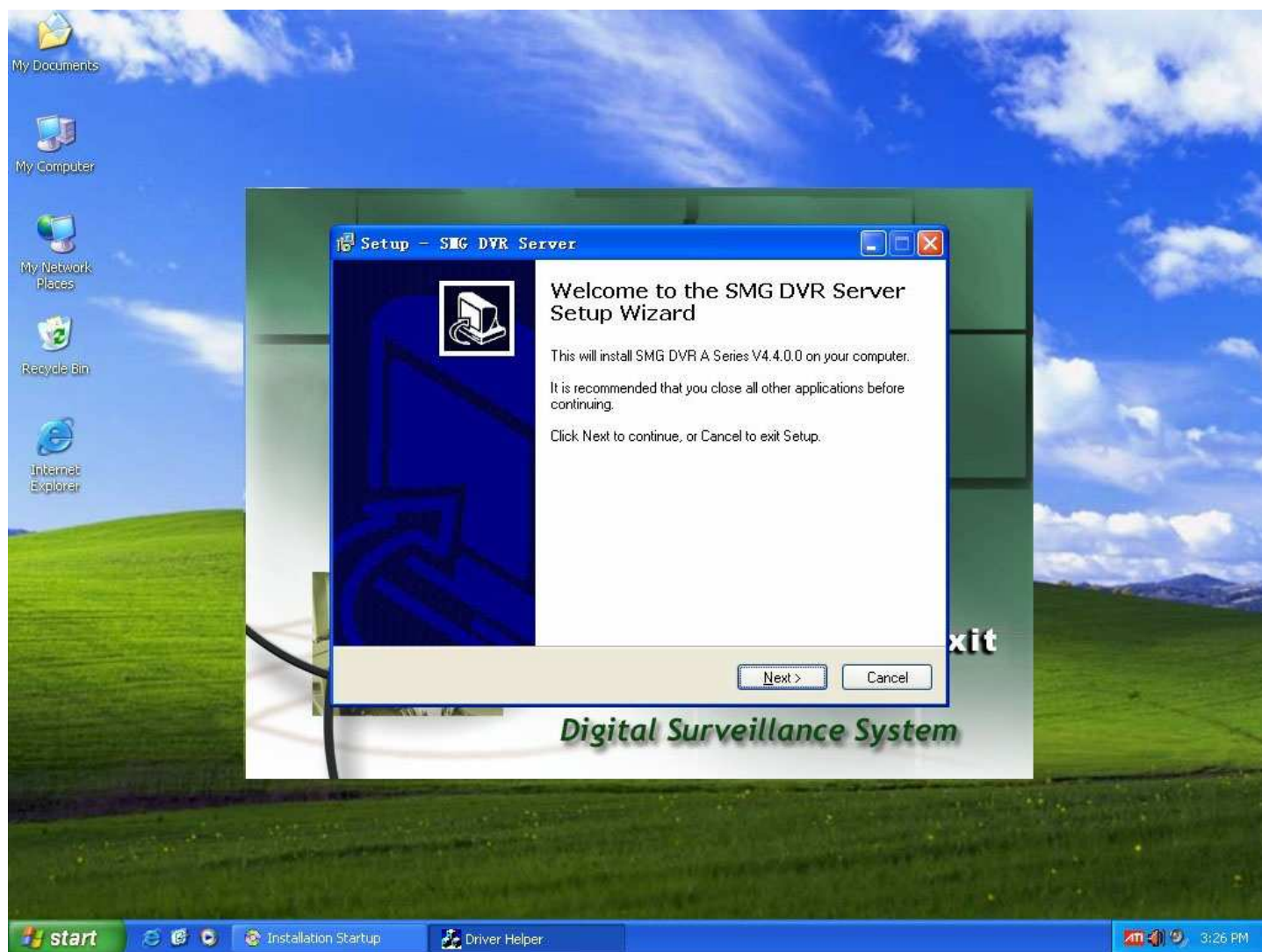
When you insert the CD into the CD-ROM driver, the program will run automatically. If not, please run the “start.exe” manually from the CD.

Press “install driver”, and then install it.

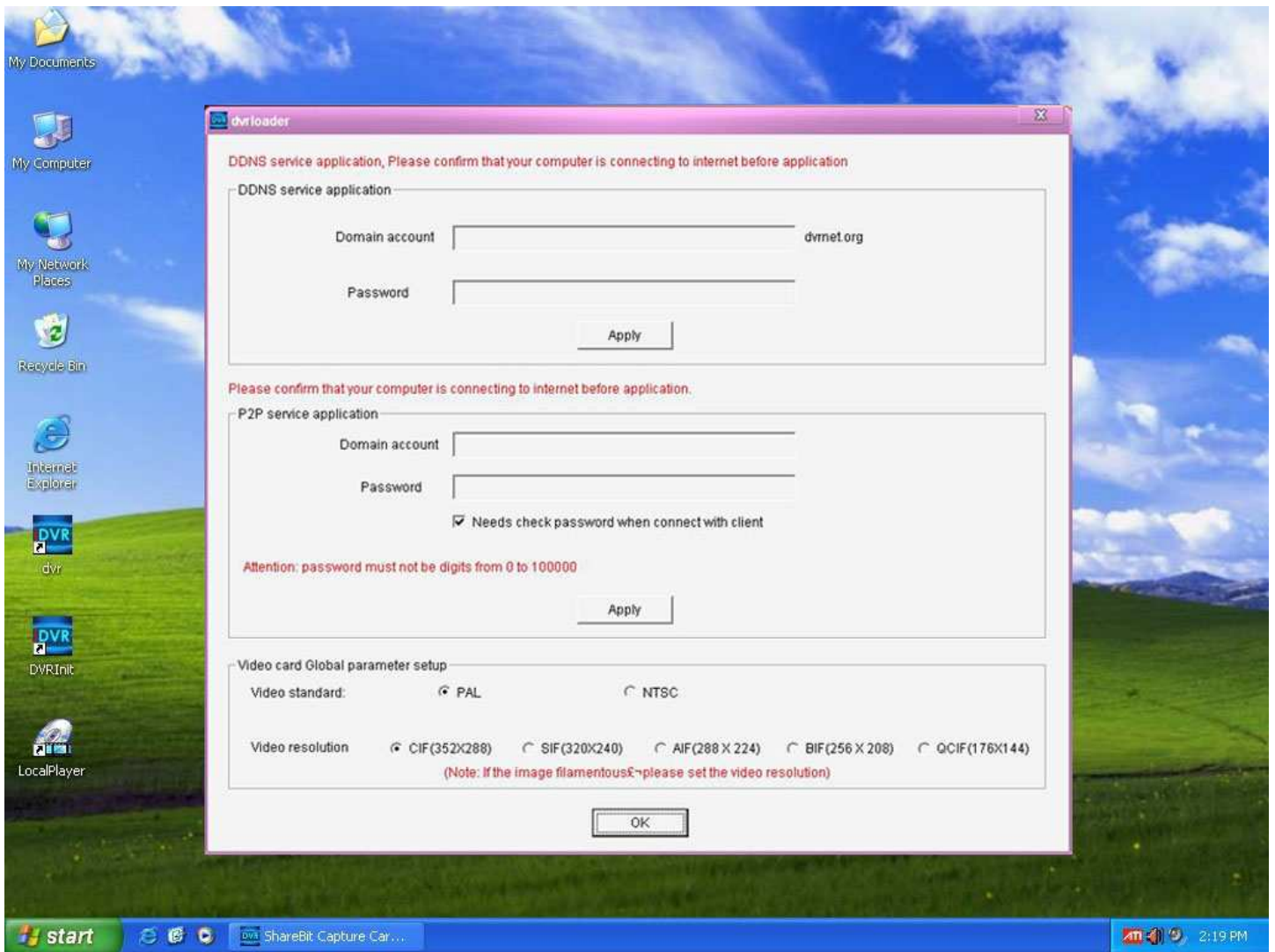
The interface is as below:



After installation driver is finished, then select the icon “installation server” from the above interface. And then install it, it like the picture showed below:



When the software install succeed, click “DVR” icon on the desktop, you will go to the bellow screen.



DDNS Service application

Input your required application user name and password, if the user name is not being registered, congratulations on you, it is noted that you have been registered successfully, and this account is available.

P2P Service application

Input your required application Security QQ user name and password, if the user name is not being registered, congratulations on you, it is noted that you have been registered successfully, and this account is available.

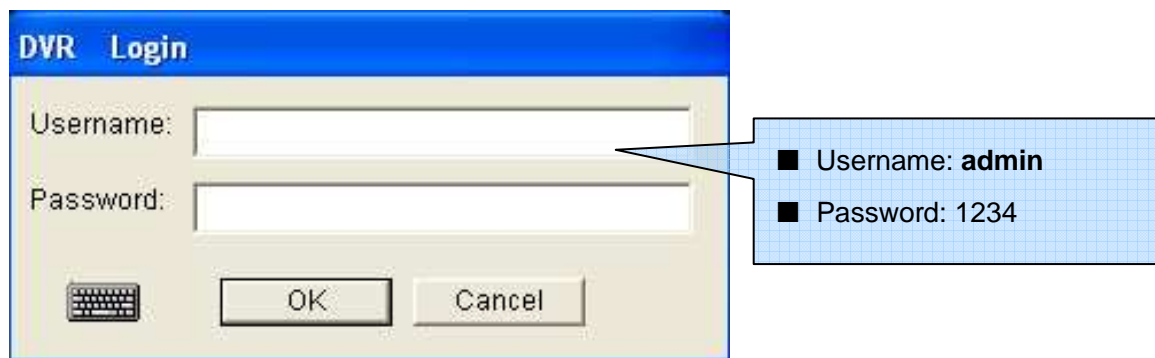
Remark: if above two functions is unusable in some areas, Users please choose the corresponded solutions according to local network service provider.

Choose the right standard, "PAL" or "NTSC" optional. Then set up video image resolution(software is defaulted based on your channel numbers on the main board to choose to adapt to the quality), software provide CIF、SIF、AIF、BIF、QCIF optional, users can adjust adequately based on computer and single machine board numbers of channels in order to meet customer best satisfaction.

After set up, Click "next".

Then you will go to the “DVR login”.

Input the Username and password as system promot.



The image shows a "DVR Login" dialog box with a blue title bar. It contains two text input fields: "Username:" and "Password:". Below the fields are three buttons: a keyboard icon, "OK", and "Cancel". A callout box with a blue grid background points to the Username field and contains the following text:

- Username: **admin**
- Password: 1234

Note: You can modify the password and manage the users from [User Management Setting].

Then you can see the main system interface:



1. **Date/Time:** Displays the current date and time, which will be written in recording files.
2. **Camera Name:** defined name of the camera, the default value is the Camera number.
3. **Preview:** It displays the number and state of the camera. It will show the 16 cameras when you have 16 video channels (camera). You can stop previewing when you click the 1,2,3,4 button. The button color will be gray when you stop previewing.
4. **Record:** It shows the status of recording. You can start recording when you click the camera button. The button color shows the status. Green mean recording, gray mean stop recording.
5. **Alarm:** Start alarm detecting when you click the camera button and let the button color become green. The button color will show the red when alarm on.
6. **Color:** Adjust the bright, contrast, saturation, hue.
7. **PTZ Control:** Control the movement of your PTZ camera. Click the panel and enter the control interface.
8. **System Control:** Control the main system functions. Click the panel and enter the control interface.
9. **Active Time:** Displays the current date and time, day and the time the system running.
10. **Login/Lock System:** Login the system or exchange user. You also can lock the system when you are away, so other people do not enter the system.
11. **Screen Division:** Select the screen divisions.
12. **Exit System:** Exit the system, you can select [return to desktop] or [Shut down the PC].

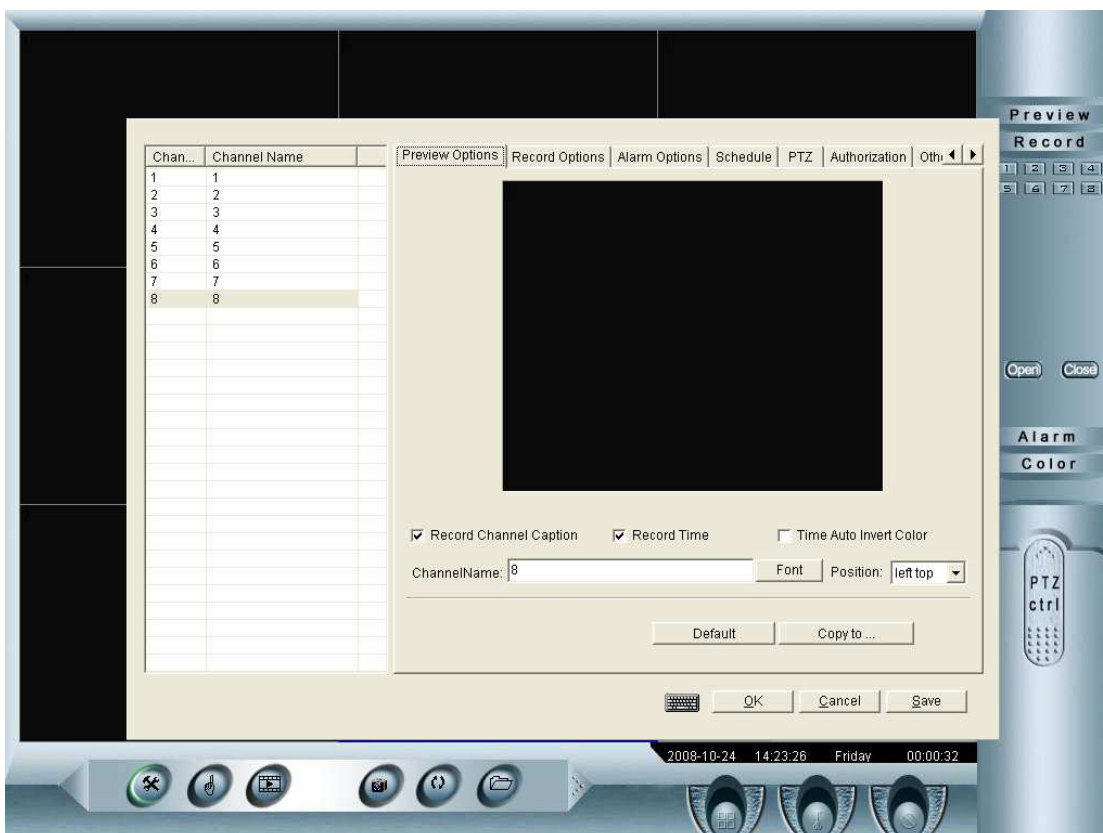
System control



1. **System Setup:** Configure system parameters include record quality levels. Remotely configure the system parameters.
2. **Schedule:** Start or stop the schedule of record and alarm detecting.
3. **Playback:** Playback the local record files or the record files at remote DVRs.
4. **Capture:** Capture a picture, the format is bmp.
5. **Circulation:** Preview the video images circularly.
6. **Other:** Use other functions on click [other] button.

System Setup:

Click [system setup]



The left column lists the camera numbers and their names installed in this DVR. You can configure camera's parameters by clicking the camera number.

The right column shows all the functions and parameters related to camera setup. You can specify detailed parameter to configure each camera. There are eight under [Camera

Setup]:

Preview Options: specify the parameters about how to preview the camera's video.

Record Options: specify the settings about recording quality, storage parameters, networking transmission method, and so on.

Alarm Options: customize alarm trigger types, corresponding actions and so on.

Schedule: you can define and save automatic work schedules here

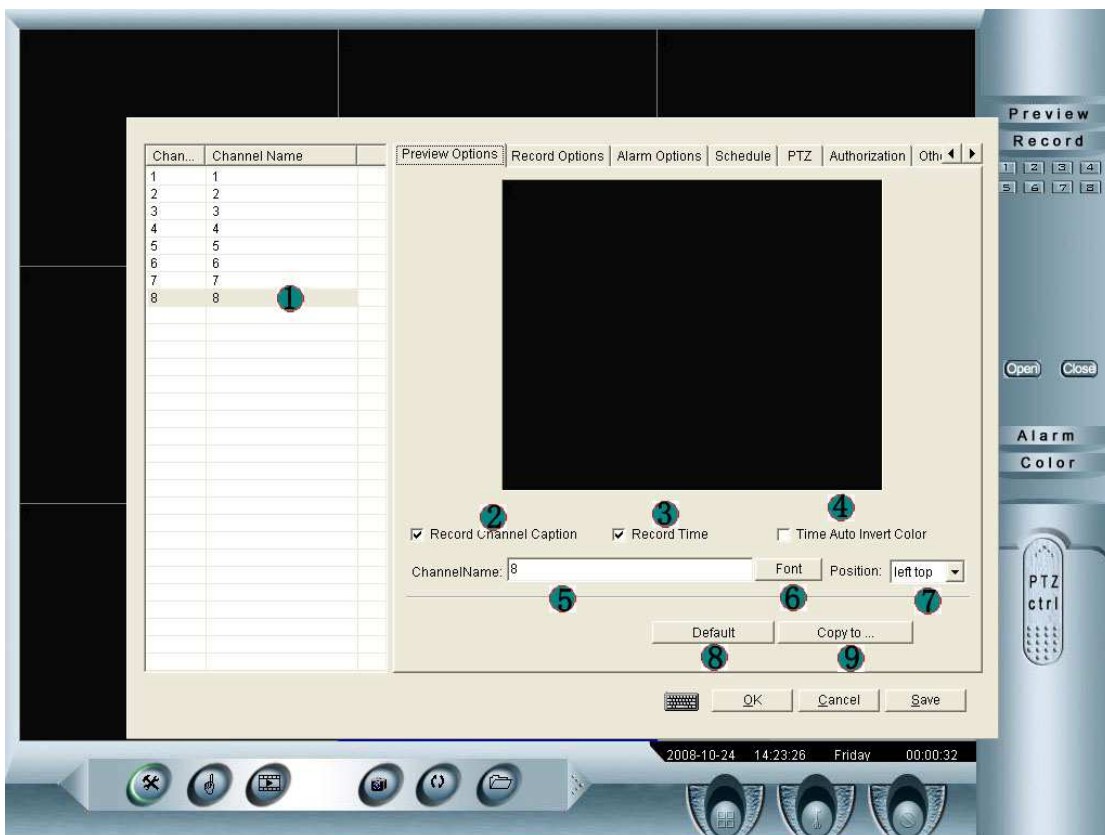
PTZ: specify the setting of PTZ here, such as product model, baud rate, COM port and so on.

Authorization: to add, edit, delete or privileges network user.

Others: specify the settings shutdown computer and reset computer time

Color: create and modify display color patterns here.

Preview Options:



1) Click to select one camera to modify the configuration.

Notice: you can only select one camera at one time, and you can copy or apply a camera's configuration to multiple cameras by using [Copy to] feature.

2) Record channel caption: click to option to show the record channel name on the video picture.

3) Record Time: optional show the recording time on the video or not.

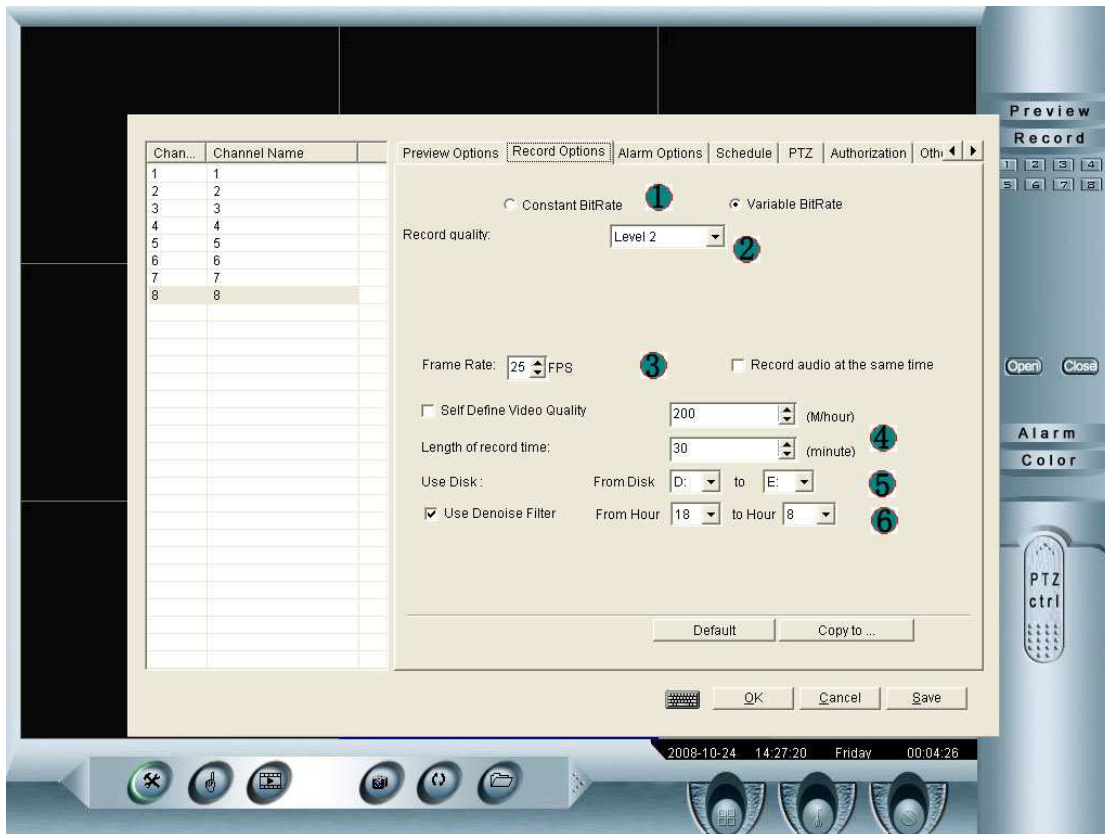
4) Time Auto Invert color: Start the function of auto bright when recording.

5) Channel name: defined the camera's name here. Camera name should be less than 20 characters.

6) Font: Setting font you like.

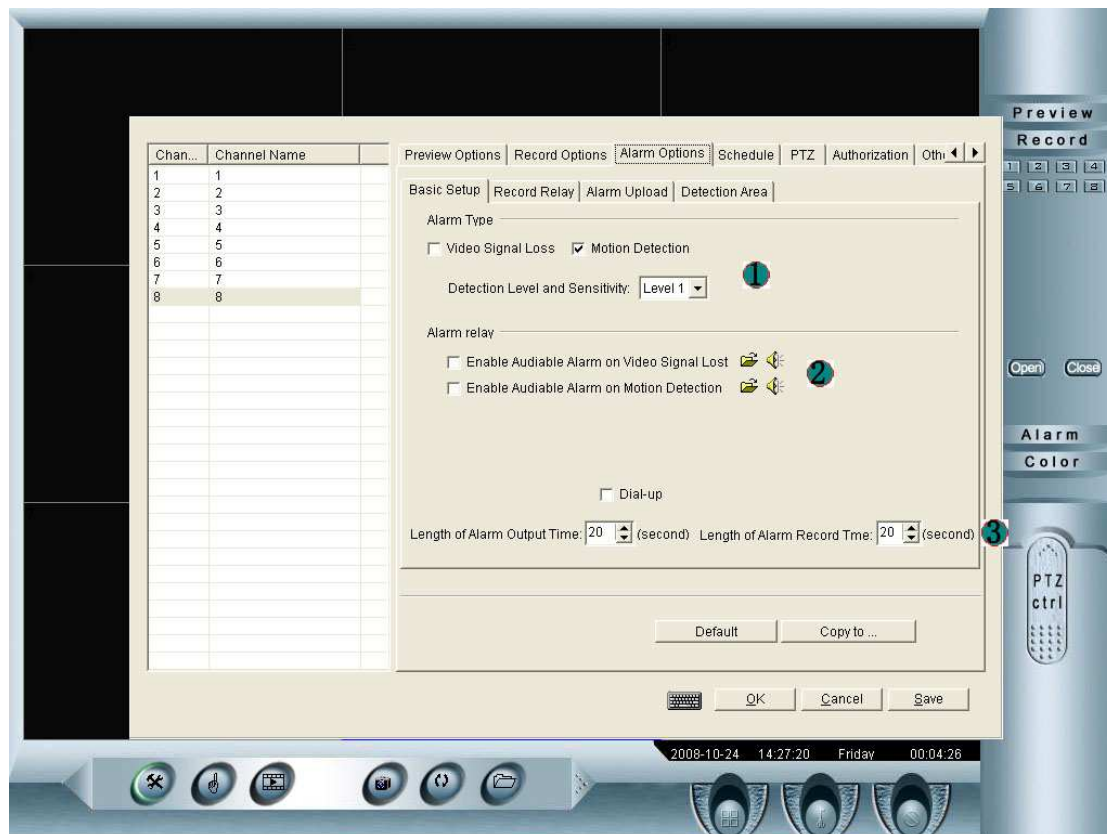
- 7) Position: Setting up the local where camera name show on screen.
- 8) Default: click [Default] button to recover back to default preview configuration.
- 9) Copy to: click [Copy to] to enter Select channel as figure 2-7. You can click [select all] to select all the cameras or channels, or you can click the channel number to select the camera you want to copy configuration to, then press [OK] or [Cancel] to apply or cancel these changes.

Record Options:



- 1) Video Format: click to choose the video format here: NTSC or PAL.
- 2) Record quality: click to choose the level of quality, there are BEST, Level1, Level2, Level3, Level4 or Level5 optional.
- 3) Frame rate: set the appropriate Frame Rate per Second by using up or down arrow under Recording Quality.
Record audio at the same time: Start the synchronization recording function.
- 4) Enforce Storage limits: By click to select this checkbox, you can set a recording rate upper limit. It is recommended to use in small hard disk circumstance.
Set Maximum Recording Time: By default, every 30 minutes' video will be created to a video file. You can change the value here to control the video file size.
- 5) Set storage drives: under [Storage], set appropriate start and end partitions that you want to store your video files.
- 6) Use Deloise Filter: When works at night, click this to reduce the file size to save the disk room.

Alarm Options:



1) Video signal loss: By click to select this option, alarm will be triggered when video signal is lost.

Motion Detection: By click to select this option, alarm will be triggered when objects in a certain area have been moved.

Detection Level and Sensitivity: Setting the detection grade: BEST Level 1~Level 5

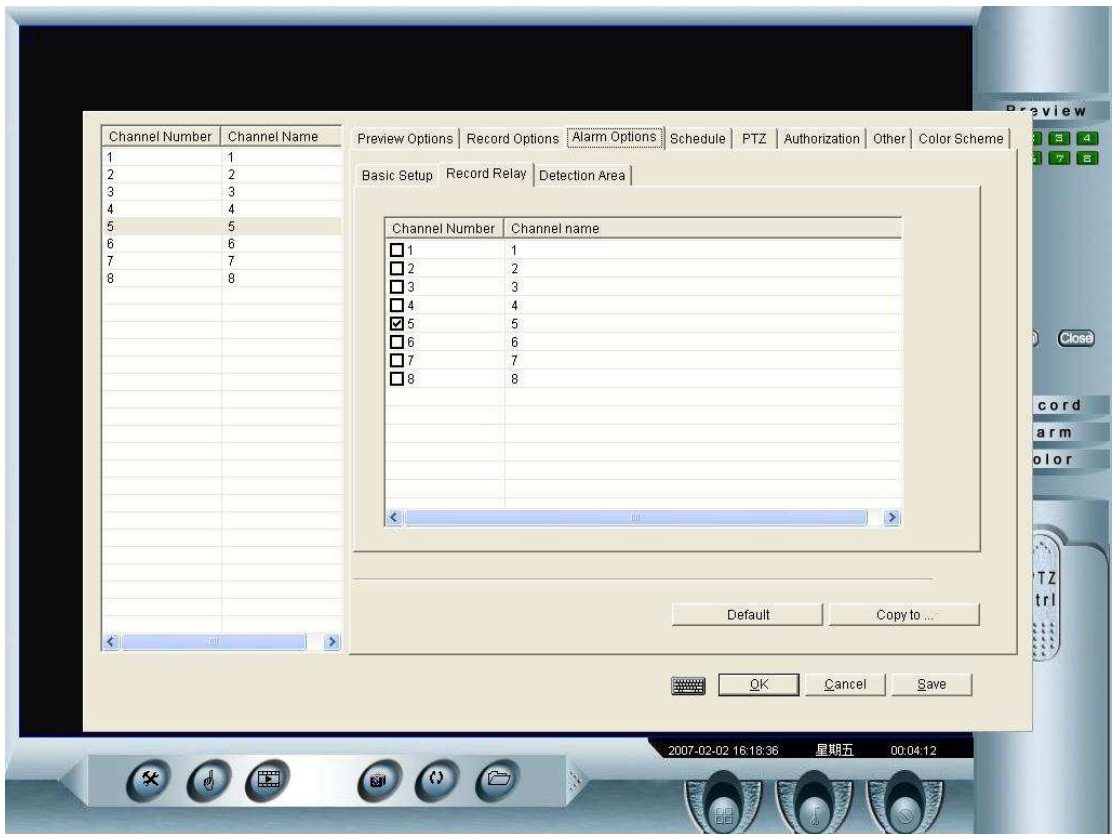
2) In the left column, choose a trigger type when you want alarm to act on.

In the right column, click open file icon to choose an audio file that you want to play for a certain types of alarm. And click speak icon to play this audio file.

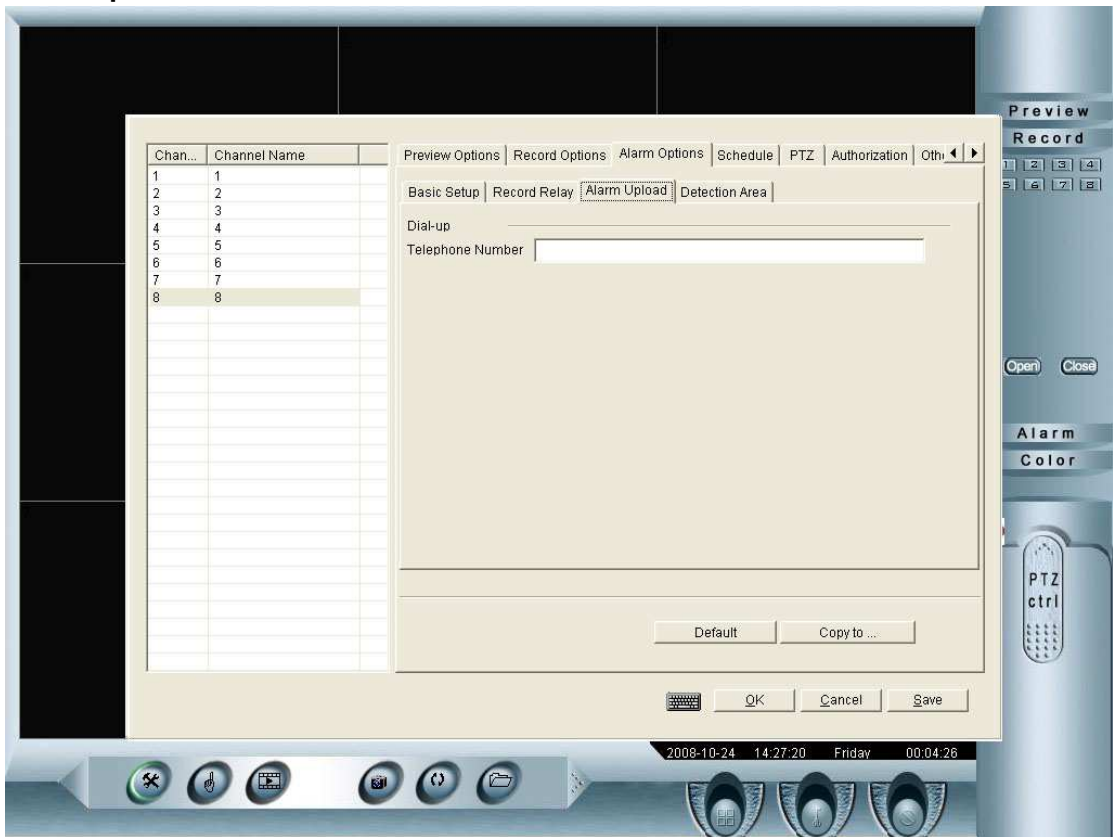
3) Alarm Duration: Set the length of alarm output time, System will output alarm information in this length of time.

Post alarm record: the length of alarm record time which is from starting record to ending record after alarming.

Record Relay: setting record channel

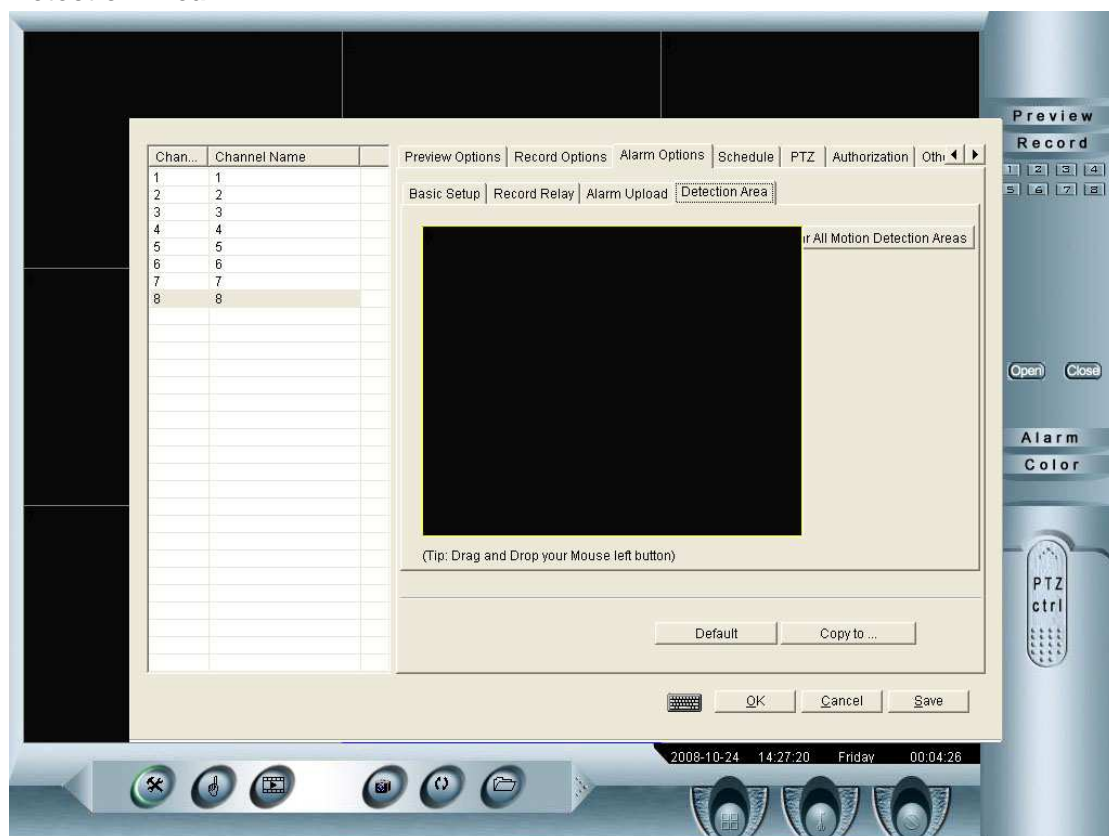


Alarm upload:



Setting telephone number here, it will auto call this number when alarm triggered; it needs some addition fixing.

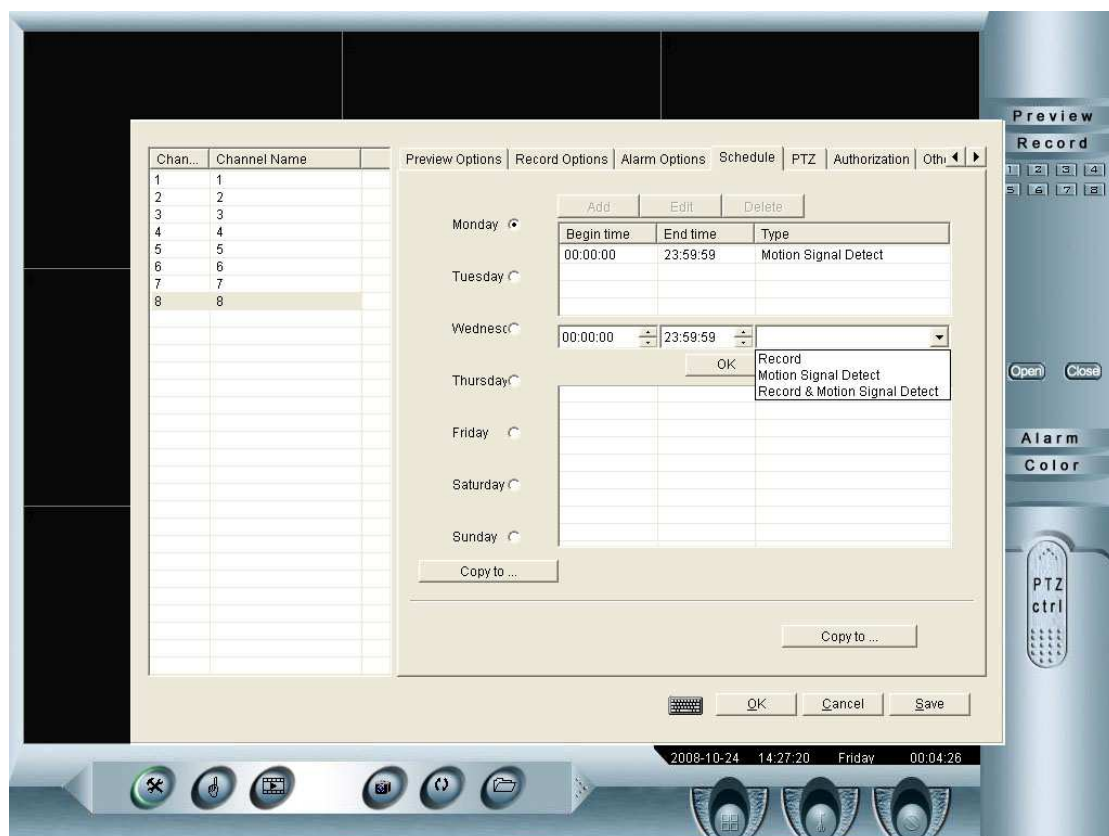
Detection Area:



You can click and drag to define a motion detection area in the video figure. Up to 7 areas can be defined per camera.

Sensitivity: click to choose an appropriate level of sensitivity.

Schedule:



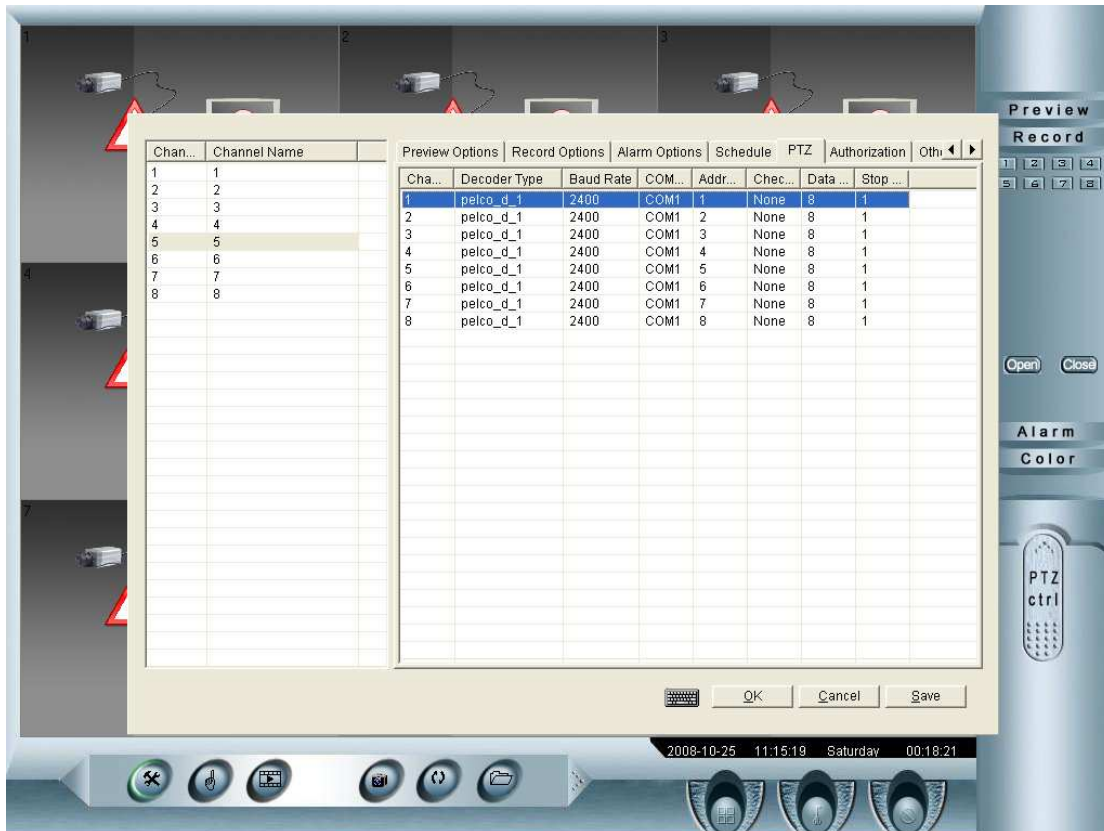
Three recording methods::

Record: recording only, and doing 7X24 hours.

Motion Signal Detect: when motion detection alarm, it will start to recording and alarm.

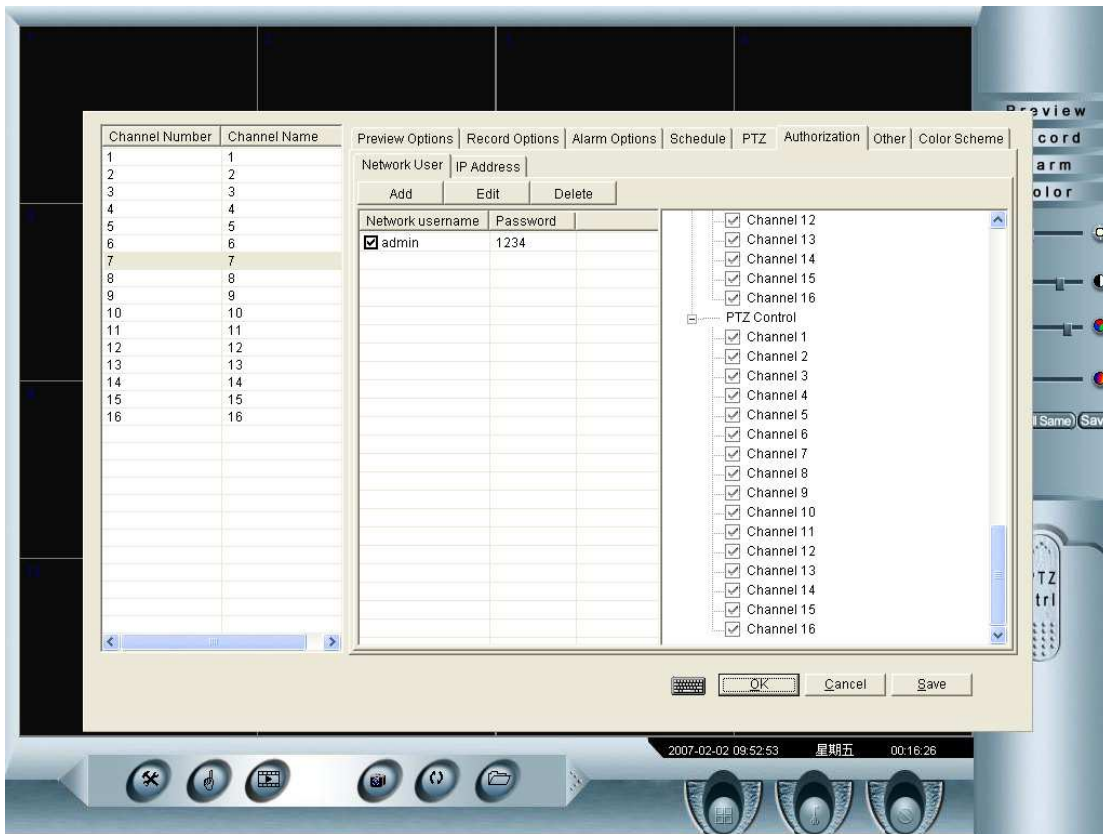
Record & Motion Signal Detect: when there isn't any motion detection, it will be continuous recording; Under motion detect status, it will go to the second recording.

PTZ:



You can set the product model, baud rate, COM port, and address

Authorization:



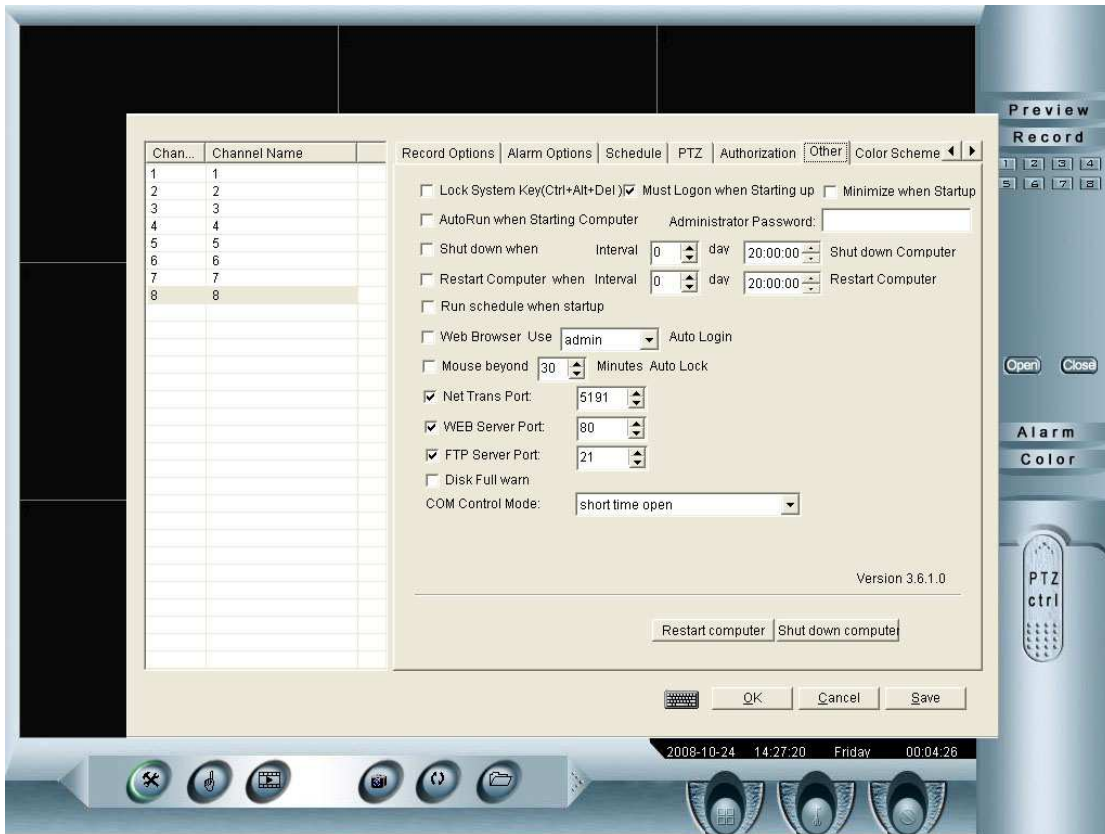
Follow these steps to add an account

1. Click [Add] button.
2. Input new account's name and password, then put him in a group, an administrator, a power user, or an operator.
Note: Each group users have default predefined functions listed in the right column. You can manage these functions later.
3. Press [OK] to finish adding an account.
4. To change this user's functions, just click to select or cancel in each function's checkbox in the right column.
5. Press [OK] to save these changes.

Follow these steps to add a remote IP address

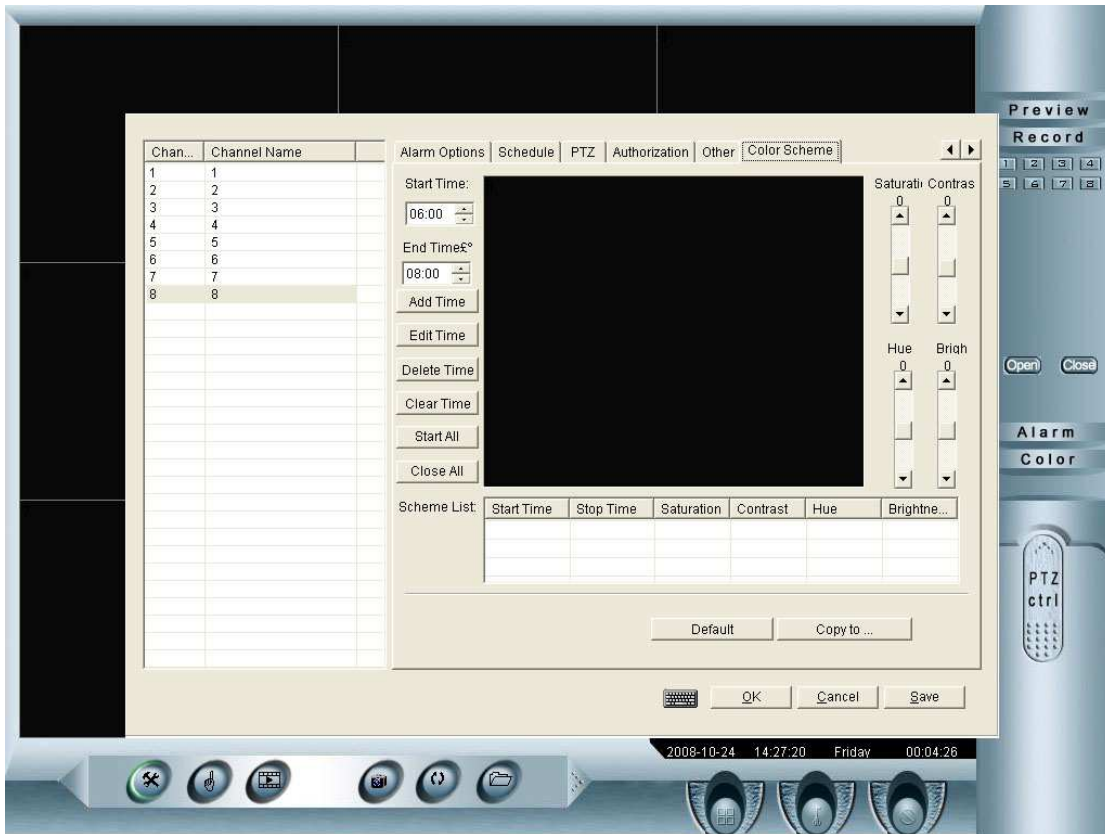
1. Click [Add] button, begin to add an account.
2. Type remote user's IP address in the box, then press [Enter]
3. Click to select or cancel the user's function list.
4. To enable IP verification besides username filter, be sure to click to select [Enable IP Verification].
5. Press [OK] to save your changes.

Other:



- 1) Secure Desktop: by click and select this option, some OS system keys will be disabled, including "Ctrl+Alt+Del", "win", etc..
- 2) Must Logon when Starting up: Choose the optional of input password or not when startup software.
- 3) Minimize when startup: Optioning if minimize the software when startup.
- 4) Auto Start Software: by click and select this option, the DVR system will run automatically after OS start. If your OS is prevented by username, you can input the username and password here.
- 5) System shut down: set a time that the OS system will be shut down
- 6) System Restart: set a time that the OS system will be automatically restarted
- 7) Net Trans Port: 5191 WEB Server Port: 80 FTP Server port: 21
- 8) Web browser use: Setting auto login in net user
- 9) Setting auto clock system when stop MOUSE 30 minutes.
- 10) Com control Mode: Optioning continuum open or instant open.
- 11) Restart computer: Restart computer when click the button.
- 12) Shutdown computer: Shutdown computer when click the button.

Color:



In some circumstance, video quality fluctuated by outside light changes or caused by camera it self. To counteract this effect, we can manually set a color patter schedule.

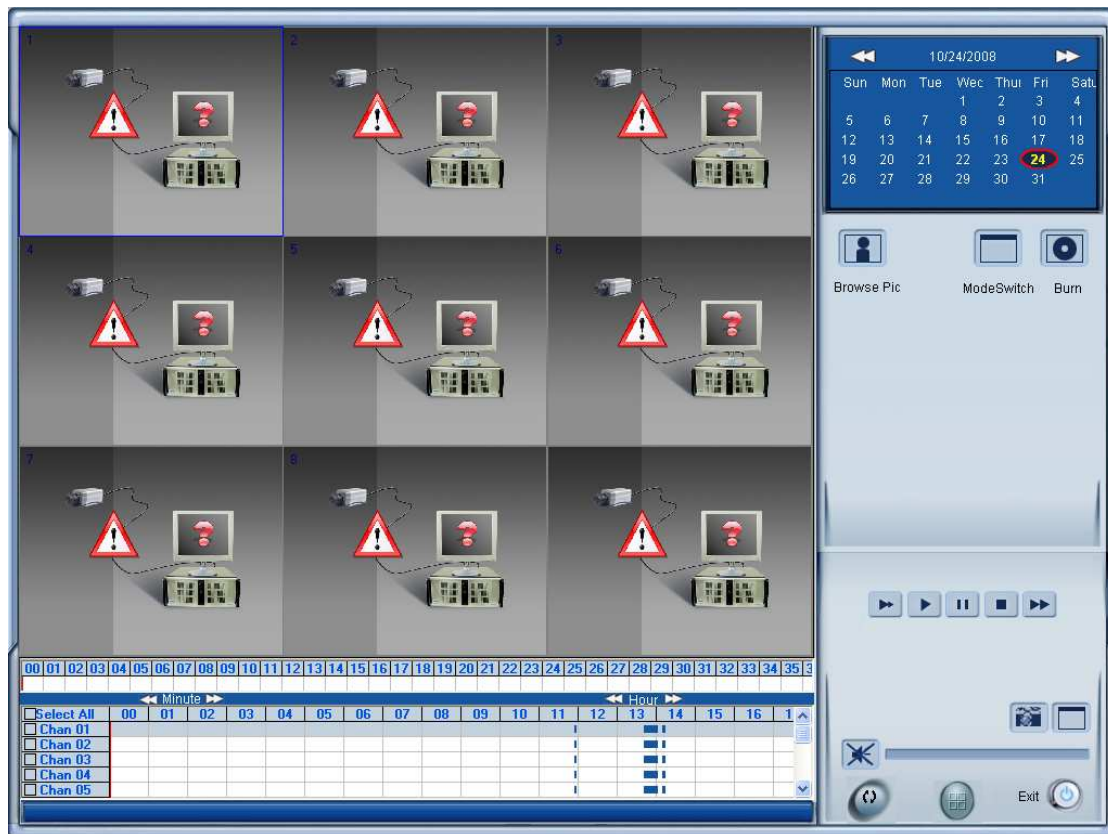
You can set a start time that let color pattern to be in effect. And adjust the slide bar to get the appropriate color pattern.


Playback



Aviable search recorded video: There are schedule search or list files optional.

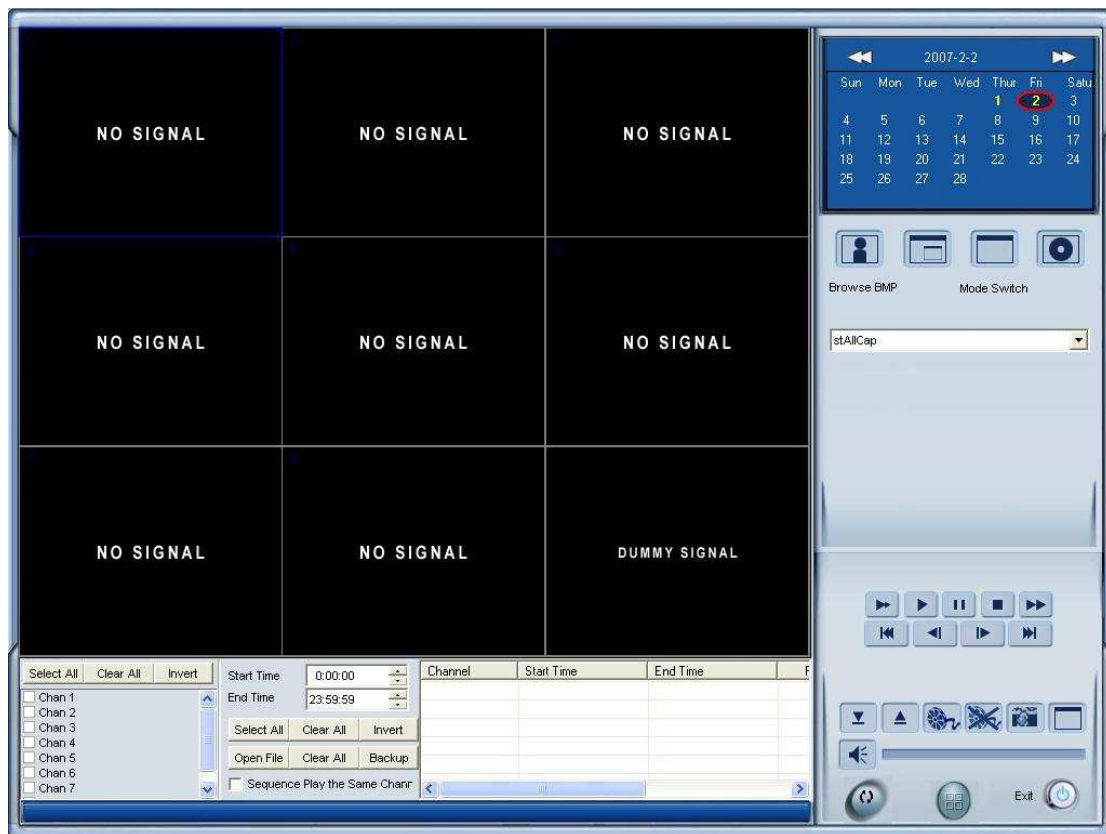
Schedule search model: select the time of video recording you want to playback, click channel of playback file, and

select the starting point ,click "▶" and then video display.



Listed files searching module: click  to enter the play module of listed files, and the screen as bellow:

Under the listed files module, you can select the channel you like, input start time and end time, and then you can find out All recorded video, and select the record file you need, click  to display it, click  to backup the recorded video simultaneity.



Conclusion: above is the software basic operation, due to software is updated frequently, some features is not be instructed timely, if users meet troubles in usage please give feedback on time, or email to FAE@lonse.net. We will give reply to you promptly with satisfaction. If any good suggestion on our software, we will be much appreciated.